



# software age

AUGUST 1969

C- 38128&STAS5983 M  
STATE TECH INST  
5983 MACON COVE  
MEMPHIS TN 38128



# If you're not happy with your job, there's a way out.



Like everyone else, we need programmers. But that's where the resemblance between SDS and almost any other company ends. We're expanding so fast our organization chart is on a blackboard. In the past year our programming staff has doubled. Fifty more programmers are needed immediately.

So call Carl Kundman collect at (213) 772-4511. Or send him a note telling about yourself. Within a week you might be able to tell your present boss, "I quit."

Scientific Data Systems, A Xerox Company, El Segundo, California.

**SDS**



# software age

AUGUST, 1969

Vol. 3—No. 8

Copyright 1969, PRESS-TECH, Inc.

- 4 Financial Currents
- 7 Conference Countdown
- 8 A Philosophy for Digital Signal Processors  
L. D. Ingwersen
- 13 Trouble Tran's Adventures in Fortran
- 15 Checkmate
- 16 The PL/1 Preprocessor: A new Dimension in Programming  
David Bernstein
- 23 Personal Lines
- 24 New Products
- 27 The Marketplace
- 29 S/A's Confidential Inquiry Form
- 30 Index of Advertisers

Publisher ..... David W. French  
Editor ..... John F. Sikora  
Managing Editor ..... Jean S. Logan  
Assistant Editor ..... Elspeth Daly  
Traffic Manager ..... Betsy Pavkovich  
Circulation ..... Ann Vickers  
Business ..... Stephenie Jensen  
Resume Control ..... Anne Wildeman

CIRCULATION OF THIS ISSUE  
**MORE THAN 130,000**  
BPA Audit Applied For

*COVER: David Severson's August cover depicts the image and role of computers in converting our urban complexes from polluted, over-populated, traffic-congested areas into livable, viable and stimulating communities.*

## SOFTWARE AGE

2211 FORDEM AVENUE, MADISON, WISCONSIN 53701  
PHONE: (608) 249-0128 OR (800) 356-8141

### David W. French

New York, N. Y.: (212) 697-5356  
Los Angeles, Calif.: Richard Faust, 9800 S. Sepulveda Blvd.  
(213) 776-0100  
San Francisco, Calif.: Ernesto Montano, 595 Buckingham Way,  
Suite 226 (415) 731-8240  
Philadelphia, Pa.: Richard D. Clemmer, 27 Acoma Lane,  
Collegeville, Pa. (215) 489-9141  
Boston, Mass.: (617) 542-1466

SOFTWARE AGE is published monthly by

## press tech inc.

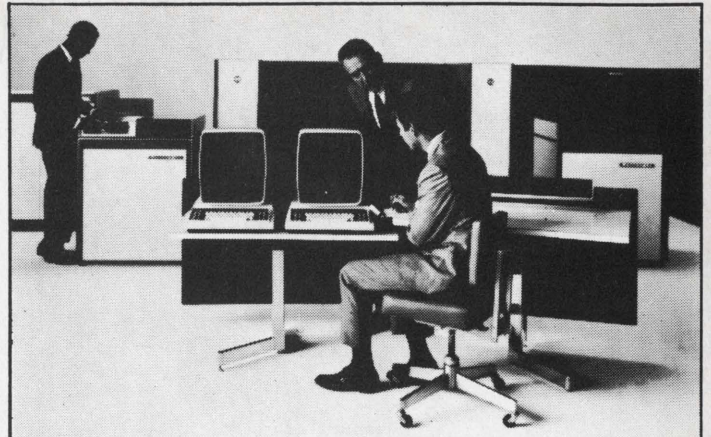
2211 Fordem Avenue, Madison, Wisconsin 53701

Subscription free to qualified readers. Others, 10/yr. Individual copies, \$1. Foreign subscriptions, \$15/yr.

For change of address please return your address label from the magazine.

Controlled circulation postage paid at Madison, Wisconsin.

AUGUST, 1969



## The B6500 is just one of the exciting things we've been doing at Burroughs

Burroughs is setting the technological pace with new and exciting long-range product concepts which are already enjoying deserved and widespread respect in the marketplace.

Burroughs is one of the most rapidly growing companies in the electronic data processing industry. World-wide revenue in 1968 was \$655 million — up 18 per cent. Earnings in 1968 were \$43 million — up 24 per cent. Incoming orders for the past two years — up 52 per cent. To handle this impressive growth, Burroughs has greatly accelerated its announced \$200 million program for 15 new plants. Now as never before, the future is wide open, for us in new business, for you in new career opportunities.

Our west coast Pasadena, California and our east coast Paoli, Pennsylvania, locations represent the corporate hubs for design and development of Burroughs language-oriented commercial computer systems. Products such as the B500, B2500, B5500 and B6500 have all been designed and built in Pasadena. The B8500 is being designed and built in Paoli, and... we've done this with relatively small engineering and programming staffs in which each member of the technical team has made meaningful individual contributions.

We are now in a tremendous growth situation, but we do not intend to forsake the very thing that we've achieved... product excellence (based on individual contributions).

So, here is what we offer...

- individual recognition
- fantastic growth
- non-defense industry
- professional environment
- east or west coast location

Current openings exist for software and hardware professionals in Operating System and Compiler Development, Design Automation, Diagnostics, and Simulation. We are looking for people with a variety of backgrounds... primarily degreed types in such disciplines as Computer Science, Electrical Engineering, Mathematics, and Physics who have from zero to five years experience. We will gladly consider other qualified candidates. Why not contact us now?

*If your location preference is:*

### EAST COAST

Send your resume to:  
G. McGrath  
Burroughs Corporation  
Large Computer Systems Orgn.  
Paoli, Pennsylvania 19301

### WEST COAST

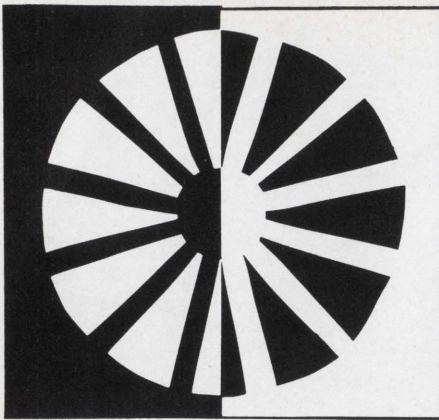
Send your resume to:  
M. Olson  
Burroughs Corporation  
460 Sierra Madre Villa  
Pasadena, California 91109

**Burroughs Corporation**



An equal opportunity employer





## MULTI-FACET PROBLEM SOLVING

The keenly honed perceptual acuity of different minds from a variety of disciplines, thinking alongside each other, brings unique insights into problem solving. At Booz•Allen Applied Research Inc., multi-faceted non-routine problems are the routine challenge. The assignments undertaken by the more than 500 professional staff members cover a broad spectrum of problem areas that require interdisciplinary involvement of a high order.

Typical assignments might include submarine communications, satellite stabilization, environmental analysis, or cost effectiveness. The range is wide; the probing is deep. Over 30 diverse disciplines interact to contribute to unique solutions.

There are no proprietary hardware interests to cloud the objectivity of the individual professional. The integrity of each staff member is unhampered. Personal fulfillment is limited only by the parameters of his self image because the challenges may take him to the edges of his own vision. Advancement can be either through channels of research or client contact. Personnel selection is necessarily limited to the scientist and engineer of rare quality.

If you are interested in the stimulating environment of interdisciplinary activity, you might well investigate your future possibilities with our expanding, internationally-operating organization. For detailed information, write Mr. Ken M. Christians, Director of Professional Appointments.

**BOOZ•ALLEN  
APPLIED RESEARCH Inc.**  
135 South LaSalle Street—Room 1748  
Chicago, Illinois 60603, Phone (312) 372-1728  
CHICAGO/KANSAS CITY/ALBUQUERQUE  
WASHINGTON, D.C./LOS ANGELES



An equal opportunity employer

# financial currents

Honeywell's new computer equipment manufacturing plant at Billerica, Massachusetts, is aiming for a \$30 million production per year rate by end of 1969, which would help the company toward its 1975 target of \$1 billion in overall computer revenues.

The plant, dedicated June 19 and situated about 30 miles northwest of Boston, would in six years contain a manufacturing, research and engineering complex employing nearly 3,500 people. It would be the largest facility in Honeywell's EDP Division.

Should the EDP Division carry its load in achieving the billion-dollar goal, its revenue will have to triple in five years, its sales force double in three, its engineering force double in four, its programmers double in three and its field service people will have to triple in five years.

Besides the new plant, which is headquarters for the division's Peripheral Device Operations, the EDP division leases or owns space in six other Massachusetts locations. \* \* \*

Automation will reach into Wall Street's "cage"—the area where large numbers of stock certificates are received and dispatched—when a securities clearance system being phased into operation becomes fully installed this fall at Goodbody and Company.

Aimed at eliminating clerical logjams plaguing Wall Street during periods of heavy trading, the system—AutoCage—will also be offered to other brokerage firms in the hope of reducing "fails"—the inability to deliver certificates on time. A recently formed company, Goodbody Systems, Inc., will market AutoCage, which utilizes a battery of advanced Bunker Ramo video terminals linked into the firm's RCA third-generation computer. Other securities firms, including the smaller operations, can use the system either in conjunction with their own computers or through the shared-computer concept. \* \* \*

Data Transformation Corporation, an all-black founded firm

which specializes in urban data systems and centers, education and aerospace computer consulting, plans to launch an intensive program to computer users with special emphasis on sociological applications. The national computer software consulting firm is headquartered in New York . . . A new data and computer systems firm, Daconics, Inc., has been formed in Sunnyvale, California, to specialize in providing turn-key systems to its customers. Goal of the new firm: "The synthesis and amalgamation of all the techniques necessary to make small and medium size computers real working tools where they are first installed." . . . Computer Input Services, Inc., a wholly owned subsidiary of Modern Data Techniques, Inc., has been established in Upper Darby, Pennsylvania, to provide computer and computer-related services in the Philadelphia area.

A new computer complex which will link the business community of North Jersey with a network of computer facilities around the nation has been opened in Paramus. Telecommunications will link data processing equipment at Creative Computer Corporation, subsidiary of Creative Logic, to 1108 Univac computer facilities in Mineola, Long Island; Phoenix; Chicago; and San Francisco. . . The remote terminal market is the target of Remcon Systems, Inc., of Garland, Texas, a new generation computer equipment company. Expecting to be in production by first quarter 1970 with a family of remote batch terminal systems priced below that of the competition, Remcon says it is preparing "to challenge the top-ranking firms in the computer equipment business for a share of the peripheral business."

The first Sigma 7 Computer in the Delaware Valley area was unveiled in Open House ceremonies at Comserv, new computer utility in Philadelphia, which claims "a fresh and exciting approach to the exploding field of computer utility service," and "a new philosophy of information." . . .



## Programmers/Analysts:

# Give IBM a hand and we'll try to make it a free one

If predictable thinking were what we wanted, we'd just program it. But what we're looking for are imagination and ingenuity. If you have these qualities, and you qualify for a job with IBM, you can be sure you'll get to use them.

### Immediate openings

There are openings for Programmers/Analysts at IBM Endicott, N.Y.

You'd design, program, test, and install application programs for our new Manufacturing Information Systems. These systems will



IBM programmers and systems analysts work in small teams on an IBM System/360.

aid manufacturing and production planning functions at all IBM facilities.

You will be involved with real-time and on-line processing applications, using IBM System/360 programming.

A Bachelor's degree and at least a year's experience are required. You should have a knowledge of basic assembler language and large-scale computer concepts.

### Grow with IBM

Today's major growth industry is information handling and control. And IBM is a leader in that field.

Our job is to help IBM improve its manufacturing and production planning functions by applying information handling and control techniques.

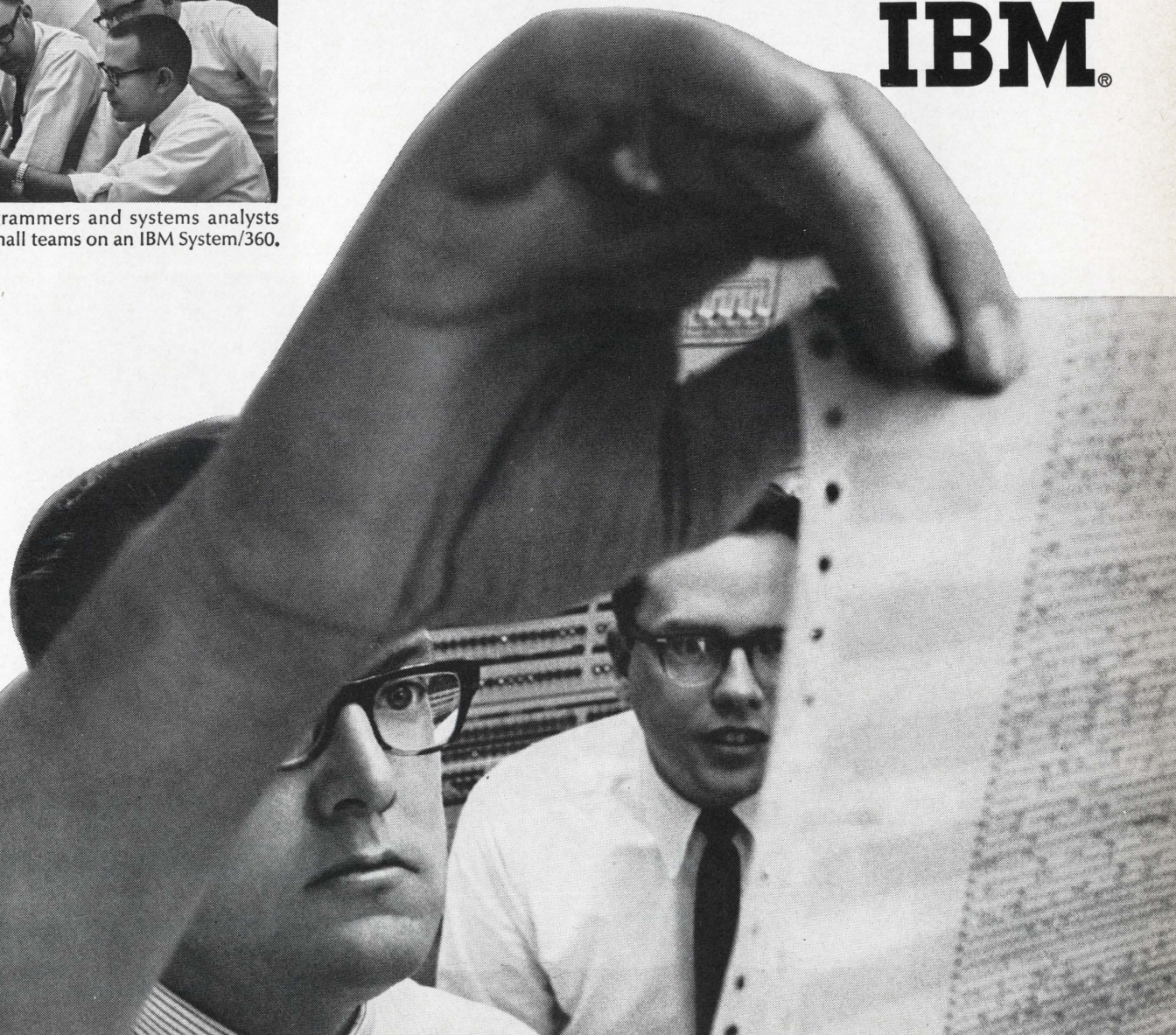
If you're a problem-solver who wants a personal sense of achievement for your hard work in a growth company, consider IBM.

### Call or write

Dom Santoni is the man to talk to. Call him collect at (607) 755-2855. Or write him at IBM Corp., Dept. CH1006, 1701 North Street, Endicott, N.Y. 13760.

**An Equal Opportunity Employer**

# IBM®





ANALYSTS ● PROGRAMMERS

# CAN YOU DESIGN OR PROGRAM —

- ... *data base* for over 300,000 parts?
- ... a system to fully load and schedule a *machine shop*?
- ... a complete *order entry system* on line to a 360/65?

OR

- ... mathematical and simulation models of VTOL aircraft?
- ... software in support of a real-time data acquisition and reduction system, airborne computers or a major retrieval system for technical data?
- ... a general purpose program for the optimization of analytical and data-defined functions?
- ... numerical procedures for the solution of complex engineering problems?

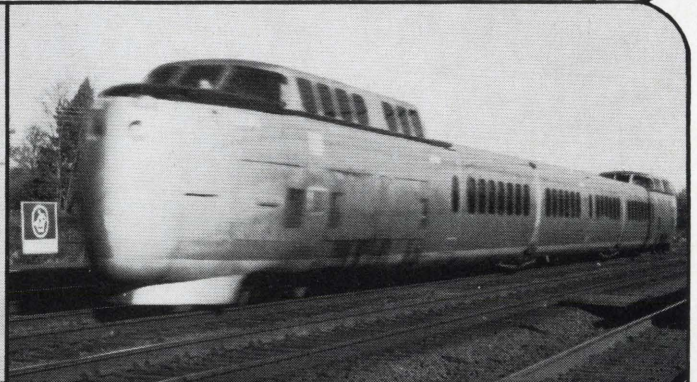
Is this the kind of cerebral involvement you want? (and can take in stride?) You'll have ample opportunity to prove it... working with our select group of stimulating, far-thinking people. They're people who are dedicated to producing the most advanced airborne and surfaceborne transportation systems... *and the computer systems to support them.*

We'll give you the tools. Our inventory includes UNIVAC 1108's and IBM 360's with graphics and teleprocessing.

So, if you're looking for growing room, we'd like to talk to you about some pretty exciting career dimensions. We have exceptional assignments at all levels of experience for: **Programmers and Analysts in both Commercial and Scientific fields.**

Send your resume in confidence, stating salary requirements, to:

MR. L. S. SHALVOY, PROFESSIONAL EMPLOYMENT



## Sikorsky Aircraft

DIVISION OF UNITED AIRCRAFT CORPORATION

U  
A

STRATFORD, CONNECTICUT

An Equal Opportunity Employer



# conference countdown

## AUGUST

- 19-22** Western Electronic Show and Convention (WESCON), San Francisco, Calif. Contact: WESCON, 3600 Wilshire Blvd., Los Angeles, Calif. 90005.
- 25-29** Datafair 69, Manchester, England. Contact: The British Computer Society, 21 Lamb's Conduit St., London W.C. 1, England.
- 26-28** ACM National Conference & Exposition, San Francisco, Calif., Contact: ACM, 1133 Avenue of the Americas, New York, N. Y. 10036.

## SEPTEMBER

- 8- 9** Society for Management Information Systems First Annual Meeting, Minneapolis, Minn. Contact: G. W. Dickson, Management Information Research Center, School of Business Administration, University of Minnesota, Minneapolis, Minn. 55455.
- 8-10** American Institute of Aeronautics and Astronautics Computer Systems Committee Conference, Los Angeles, Calif. Contact: Dr. Eugene Levin, Aerospace Corp. P.O. Box 95085, Los Angeles, Calif. 90045.
- 8-12** International Symposium on Man-Machine Systems, Cambridge, England. Contact: Robert McLane, G-MMS Meetings Chairman, Honeywell Inc., 2345 Walnut St., St. Paul, Minn. 55113.
- 15-17** Joint Conference on Programming Languages for Numerically Controlled Machine Tools, Rome, Italy. Contact: E. L. Harder, R & D Center, Westinghouse Electric Corp., Beulah Rd., Pittsburgh, Penn. 15235.
- 22-23** Systems Documentation Workshop, Chicago, Ill. Contact: Tony Raitz, Systemation, Inc., Box 730, Colorado Springs, Colo. 80901.
- 28-** International Systems Meeting of the Association for Systems Management, New York, N. Y. Contact: Richard Irwin, Association for Systems Management, 24587 Bagley Rd., Cleveland, Ohio 44138.

## OCTOBER

- 1- 5** American Society for Information Science Annual Meeting, San Francisco, Calif. Contact: ASIS, 2011 Eye St., N.W., Washington, D.C. 20006.
- 2- 3** Second Advanced EDP Audit and Control Conference, New York, N. Y. Contact: Harold Weiss, Automation Training Center, 1930 Isaac Newton Sq. E., Reston, Virginia 22010.
- 9-11** Developing Professional Manpower through Action, conference of DPMA Division 3, Little Rock, Arkansas. Contact: Robert Redus, 6901 Murray St., Little Rock, Arkansas.
- 19-22** 1969 National Conference of the American Records Management Association, St. Louis, Mo. Contact: ARMA National Headquarters, 24 N. Wabash Ave., Chicago, Ill. 60602.
- 26-30** Joint Conference on Mathematical and Computer Aids to Design, Anaheim, Calif. Contact: E. G. Kimme, Collins Radio Company, 19700 Jamboree Road, Newport Beach, Calif. 92663.
- 27-29** Data Processing Supplies Association's Fall Meeting, New York, N. Y. Contact: Data Processing Supplies Association, 1116 Summer Street, Stamford, Conn. 06905.
- 27-31** BEMA Annual Exposition & Conference, New York, N.Y. Contact: Paul Notari, BEMA, 235 E. 42nd St., New York, N.Y. 10017.
- 28-30** 24th Annual Instrument Society of America (ISA) Conference & Exhibit. Contact: Ray Cooley & Associates, Inc., 4848 Guiton St., Houston, Texas 77027.

## INSTANT INPUT

Let our national retrieval system convert your Instant Input to immediate Feed Back.

Let us evaluate your qualifications against all orders in our system. Positions are located in all areas of the country.

Send in your resume today. Circle the reader card number 1.

No cost or obligation. All replies strictly confidential to J. J. Shields:



**FOX-MORRIS ASSOCIATES**  
*Personnel Consultants*

**Philadelphia:**

**1500 Chestnut St., Philadelphia, Pa. 19102**

**New York:**

**Pan Am Bldg., 200 Park Ave., New York, N. Y. 10017**

**Wilmington:**

**2115 Concord Pike, Wilmington, Del. 19803**

# EDP

- **Programmers**
- **Analysts**
- **D. P. Management**

**CLIENT COMPANIES ASSUME OUR FEE**

**Fast, Efficient, confidential service to individuals seeking new positions in the field of data processing. Call, write or visit one of our offices. Data Processing Placement since 1959.**

**Computer Personnel Agency, Inc.**

**LORNE EVJE**

**12 Geary Street  
San Francisco, Calif. 94108  
Phone: 982-0840**

**NATIONWIDE DATA PROCESSING OPPORTUNITIES**



# A PHILOSOPHY FOR DIGITAL SIGNAL PROCESSORS

L. D. Ingwersen

## Introduction

In recent years, a number of methods for shortening computer time used in digital processing of time series data have been presented in apropos journals and trade magazines. These methods are important to two groups of computer users. The first computer user group processes signals on a time-shared company device or at a data center. He wants to minimize the amount of time which appears on his bill.

The second group of computer users processes large amounts of time series data. This user probably has a computer system[s] which is specially configured to enhance the throughput of time series data analysis problems. As the user's quantity of time series data to be processed increased, many of these users purchased *peripheral* equipment designed to do specific steps of the signal processing arithmetic at high speeds.

The basic operation to be performed on time series data is convolution. So, many computer manufacturers offered high speed digital convolvers. Customers ordered faster Convolvers as data quantities increased further. These first generation convolvers were hardwired to do convolution operations. They were unable to calculate, with sufficient speed, the more recent processing methods which reduce the total calculation steps for given length or types of input data and for given end results.

The objective of this article is to introduce a signal processing philosophy which will allow the above multiplicity of usage at high speeds. The philosophy is to be implemented in a *peripheral* computation device.<sup>1</sup>

## Capabilities

To start development on a signal processing algorithm module one would ask himself to list the capabilities needed by the signal processing industry. The algorithm module should be capable of convolution which is the backbone of filtering and correlation techniques. The device should have high speed recursive (or feedback) capabilities to implement this class of high speed filtering techniques. Further, the module should be capable of Fast Fourier Transforms [FFT].

<sup>1</sup>The philosophy has been implemented in Control Data Corporation's Matrix Algorithm Processor [MAP].

These basic capabilities would give the user a device capable of computing via most methods being used now.

Because new techniques of some merit appear quite often, our machine should be structured such that new techniques can be added quite easily.

The device should be capable of Matrix and Vector algebra and running totals. This capability can lead to calculations such as sum of square in addition to Matrix multiplication and addition.

## Speed

All of the above capabilities can be obtained by purchasing a general purpose computer. That places us in the first user grouping. Our *peripheral* signal processing algorithm module should be capable of very high speed arithmetic operation. A reasonable measure of the convolvers speed is its effective multiply-add time. The philosophy to be described can also be measured in this manner.

The signal processing algorithm module should be capable of a very short optimum effective multiply-add time [125 nanoseconds, for example]. To further enhance our speed, the algorithm module should be a completely parallel device. That is, it should be capable of doing a string of jobs without control from the central processor. This parallelism feature, along with the ability to easily keep abreast of new techniques, leads to the conclusion that the device must be programmable.

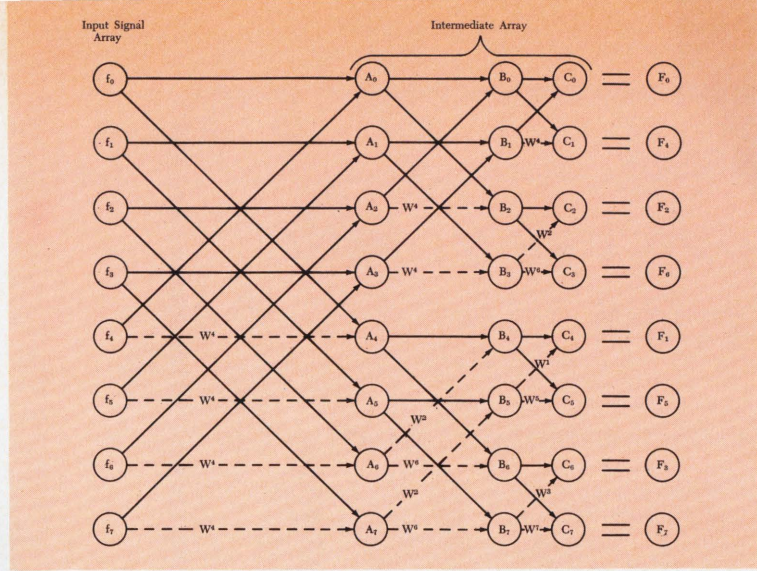
## Arithmetic Instruction Set

The next issue is the instruction set. If we should decide upon arithmetic instructions which effect only a single multiplication or a single addition, or both, we will be no faster than a general purpose computer. We really need a method where one instruction initiates a large number of multiply and add operations . . . a macro instruction. We could use some type of hardwired, read-only memory to control the operation performed by an arithmetic unit. Unfortunately, this would necessitate a hardware memory for each method or operation to be used. Further additions, or modifications, would lead to hardware changes to the processor. Thus,



**Ingwersen** graduated from the South Dakota School of Mines in 1967. Immediately following graduation he joined Control Data where he is a project engineer in the Development Division for CDC's 3000-1700 computer systems. During the time at Control Data Ingwersen has worked extensively on algorithm modules for the seismic industry.

**Fig. 2.** Signal flow graph illustrating harmonic analysis of an 8-point input signal array  $[f_0, f_1, \dots, f_7]$  by the Cooley-Tukey algorithm. Solid and dashed lines between circles represent multiplying factors of 1.0 and powers of  $W$  [ $W = e^{-2\pi j/N}$ ], respectively. [adapted from Rader [McCowan [1966]].]



neither hardware nor software macro instructions provide an adequate answer.

What we really need is a compromise. We need an *Execute* macro instruction which can combine several arithmetic operations into one instruction. The *macro* needs to be structured such that we can easily chain very few execute instructions together and develop a complex routine such as a Fast Fourier Transform [FFT] or matrix multiplication.

Our hardwired arithmetic macro should be flexible. Thus, it should have variables which are entered, incremented, decremented, and shifted via non arithmetic instructions. These instructions we shall refer to as Augmenting Instructions.

Below is the equation for the macro *Execute* instruction used in CDC's MAP II.

$$\text{Eq. 1 } C_j = d[R_j] + \sum_{i=0}^{LC-1} a_i b_{i+j}$$

Ap.  $b_q$   $j = 0, 1, 2, \dots, PC - 1$

where:  $P = i \text{ AIF} + j \text{ ASAI}$  and  $q = i \text{ BIF} + j \text{ BSAI}$ .

$a_n = n^{\text{th}}$  A Array Variable

$b_n = n^{\text{th}}$  B Array Variable

LC = number of multiply-adds/answer

PC = number of answers/macro

$[R_j]$  = contents of location where Result  $C_j$  is to be stored

AIF = A Array Indexing Factor

BIF = B Array Indexing Factor

ASAI = A Array Starting Point Index value

BSAI = B Array Starting Point Index value

$d = 1$  or  $0$  only

Note:  $R_0$ ,  $a_0$ , or  $b_0$  are variables set by the programmer for the macro as are LC, PC, AIF, BIF, ASAI, and BSAI. These values serve as a definition of array core areas.

This macro can be made into a simple multiply or add by using the proper variables for the equation. Further inspection shows that one execute instruction can be used for a convolution, Partial Matrix multiplication, vector multiplication, sum of squares, recursive filter operation, and others.

Comparing the equation of discrete convolution [Equation 2] with Equation 1 we see that

$$\text{Eq. 2 } C_j = \sum_{i=0}^{LC-1} a_{i \text{ AIF}} b_{i \text{ BIF} + j \text{ BSAI}} \quad j = 0, 1, \dots, PC - 1$$

convolution is merely a *subset* of the macro capabilities. By making ASAI = 0, and  $d = 0$ , the macro becomes a convolution instruction.

For further illustration of the use of the macro variables, if BSAI was also zero, and the A Array was equal to the B Array [ $a_0 = b_0$ ] and  $PC = 1$ , the macro becomes a sum of squares instruction.

### Augmenting the Execute Instruction

To Augment the Execute Instruction, we will need housekeeping instructions. First, we need a variable load instruction. When executed, this instruction will place its operand field in the designated variable's storage area. This instruction may be used for the initial entry of variables.

Several of the methods in which we may develop interest perform an operation several times with only minor alterations of variables. [A good example of this is the Cooley-Tukey Algorithm (6).] It would certainly reduce our programs if we had instructions to slightly alter macro variables, and an instruction which would allow us to use the same slightly altered macro[s] repeatedly.

To alter variables, we will need shift, add, and subtract instructions. These instructions will alter the previous contents of a variable according to the instruction. In order to use the macro subroutines repeatedly, we need an indexed jump instruction.

Ins 1

Ins 2

.

.

Ins  $n - 1$

.

.

Ins  $m$

.

The nested indexed jump instructions are Instruction  $n - 1$  and  $m$ .

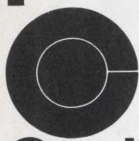
**Figure 1.**



# career opportunity with Capitol.

## programmer / analyst

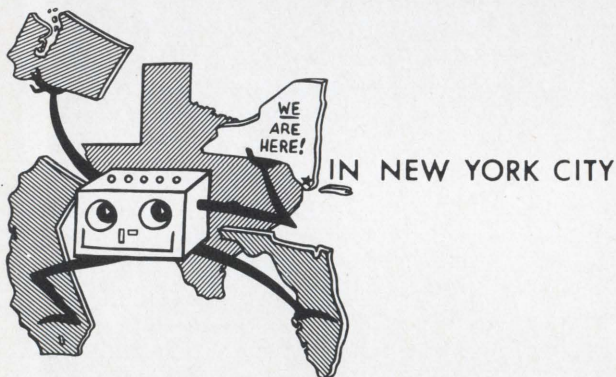
Challenging opportunities exist in the design and implementation of a nationwide inventory control system. Our equipment includes 360/20 and 40, using 2314's. We require 2 to 5 years commercial programming experience, preferably utilizing COBOL.



Professional Employment

## Capitol Industries

1750 No. Vine Street  
Hollywood, Calif. 90028  
(213) 461-3252



IN NEW YORK CITY

No matter where YOU are, if you're reading this ad and haven't been in touch with us yet, let's get acquainted!

Our clients are major corporations throughout the country and we are on-line to outstanding opportunities they have available for computer professionals.

At Management Scientists we specialize in personalized job selection—not mass resume processing. And after evaluation of your background, we waste no time in directing you to the most rewarding career positions. For the best data processing jobs coast to coast, send us your resume or call.

## Management Scientists, Inc.

101 Park Ave., New York, N. Y. 10017—Dept. SA 8-69  
(212) 532-7710

Career Planners: DATA PROCESSING & MANAGEMENT SCIENCES

Further, we would like to be able to nest indexed jump instructions to give us capabilities for as many nested *do loops* as we can get into the program core area. Thus, the indexed jump instruction will give us subroutines and nesting capabilities.

### FFT Applications

Looking at Equation 1, it is not immediately obvious that the Cooley-Tukey Algorithm can be computed in this manner. To develop an FFT from this equation, one looks to Shanks and Cairns (2) where the FFT is developed into a series of particle matrix multiples as shown below.

Figure 2 shows an 8 point example of the decimation in time version of the FFT.

From this graph, note that any component of the intermediate arrays can be described by an equation similar to Equation 3.

$$\text{Eq. 3 } A_4 = F_0 + W_4 F_4$$

Expanding Equation 3 into real and imaginary components:

$$a_4 + i\alpha_4 = f_0 + i\beta_0 + [W_4 + iv_4] [f_4 + i\lambda_4]$$

Further:

$$a_4 + i\alpha_4 = f_0 + i\beta_0 + w_4 f_4 + iw_4 \lambda_4 + iv_4 f_4 - v_4 \lambda_4$$

Separating this into real and imaginary parts:

$$\text{Eq. 4 } a_4 = f_0 [1] + [0] \beta_0 + w_4 f_4 - v_4 \lambda_4 \text{ and} \\ \alpha_4 = [0] f_0 + [1] \beta_0 + w_4 \lambda_4 + v_4 f_4$$

Thus, each of the values which constitute  $A_4$  are calculated via a multiply-add operation. In fact, only four macro executes are necessary to compute this version of the Cooley-Tukey Algorithm (for up to 4096 points) in CDC's MAP II.<sup>2</sup>

### Feedback Applications

To do the various types of feedback filtering, we need the capability to restoring answers into an array area. This area is equal to the operand area in each level of the FFT. Some forms of recursive filtering require a replace-add to storage areas. This explains the  $[R_j]$  seen in Equation 1. Note that when the variable  $d = 1$ , we do a replace-add to storage and when  $d = 0$ , we do only a replace to storage.

### Matrix Operations

The formula for vector multiplication is shown in Equation 5.

$$\text{Eq. 5 } a[b] = \sum_{i=0}^{LC-1} a_{jASAI} \cdot b_{jBSAI} \quad j = 0, \\ 1, \dots, PC - 1$$

This is also a subset of the macro execute instruction. The other Matrix applications are also this simple.

<sup>2</sup> For further explanation, see Shanks and Cairns paper.



## Flexibility

The only goal not fully discussed in flexibility, the ability to integrate new methods easily. One group of methods now being used in digital processing of radar traces places skirts on the frequency domain power or magnitudes spectrum. Here the  $K^{\text{th}}$  frequency  $[A_k]$  is given added power depending on the frequencies on either side.

For example:

$$A'_k = dA_{k-2} + eA_{k-1} + A_k + eA_{k+1} + dA_{k+2}$$

This is again a subset of Equation 1 and can be done with one execute instruction.

Another example of flexibility is the use of the macro in separating answers from a dual trace FFT operation. In general, the input array for an FFT program contains all real valued points [the imaginary values = 0]. If a second real valued trace is placed in the imaginary locations, both traces can be transformed at one time. The answer separation is done via the equations:

$$A_k = 1/2[\text{RE}(F_k + F_{n-k}) + i\text{Im}(F_k - F_{n-k})] \text{ and}$$

$$B_k = 1/2[\text{Im}(F_k + F_{n-k}) - i\text{RE}(F_k - F_{n-k})],$$

where array A was the *real* trace. An example program for the separation process contains one execute instruction inside two *do loops* such as those in Figure 1.

## Conclusions

The purpose of this paper is to present a method for building a *peripheral* signal processor. In the introduction, the goals were presented. These goals are listed below in short phrases.

Convolution

Feedback Filtering

FFT

Flexibility

Matrix Applications

The method used to reach the goals is a macro arithmetic instruction. The value of the *macro* execute instruction stems from the fact that most of the problems incurred are a subset of the high-speed hardwired macro. Other complex problems, such as an FFT, are easily programmed with very few execute instructions. Note that the method with which the FFT operands are placed in core makes variable increment core storage an important factor.

Although the FFT programmed on this device will not be quite as fast as an algorithm

# PROGRAMMERS & ANALYSTS

## Immediate Openings

at

## Air Force Western

## Test Range

with

## FEDERAL ELECTRIC CORPORATION

Since 1959, Federal Electric Corporation has been providing technical and management support to the operation of the Western Test Range at Vandenberg Air Force Base in California. The Lompoc/Vandenberg area, located 55 miles north of Santa Barbara's smog-free area, provides readily available housing for all income levels. The Lompoc schools have been rated in the top ten in the nation. A master's degree program is being conducted by the University of Southern California; plans are being readied for a major college campus. The area is serviced by 5 major shopping centers.

### COMPUTER PROGRAMMER

BS or BA for real-time scientific and systems applications associated with range launch support and implementation. Work will include real-time missile trajectory impact prediction, trajectory analysis and simulation and post flight data reduction. Positions are open at all levels. 3-5 years' experience required.

### MATH ANALYST

A BS to a PhD in math or physics to work on problems in orbital determinations, impact predictions, trajectory analysis, error propagation due to radar and orbital sources of error, atmospheric physics, astrodynamics, statistical simulation and communication theory. Areas of investigation: furnish the analytical treatment of mass models associated with missile launch support. Minimum of 3-5 years' experience related to missile range support satellite tracking or trajectory analysis.

### SYSTEMS ANALYST

BS to MS in math, physics or computer science. Responsible for analysis, design and integration of software required for large real-time data reduction and management information systems. Related experience in radar and telemetry systems, feasibility studies, instrument analysis and software optimization, cost effectiveness, acceptance test plans and software specification generation. 3-5 years' experience required in related systems design, analysis and integration.

Please forward your resume, in confidence, to Employment Supervisor, Federal Electric Corporation, Box 1886, Vandenberg AFB, California 93437.

**FEDERAL ELECTRIC  
CORPORATION**

**ITT**

A Plans for Progress Equal Opportunity Employer (m/f)



# SYSTEMS

## Opening at Sperry Gyroscope

... Where You Match Your Abilities Against the More Demanding Kind of Problems

When a problem looks tough, complex, advanced—someone will say "Send it to Sperry Gyroscope". In turn, our reputation attracts the professional who thrives on this kind of stimulation and enjoys the satisfaction of achievement. We are located in suburban Long Island.

### SYSTEMS ANALYST/ENGINEER

with a grasp of interfaces

Responsibilities in design and implementation of systems specifications reflecting user-defined requirements. Able to deal effectively with all levels of management, and to understand interface between traditional business functions such as finance, marketing, manufacturing, and these functions in the context of the overall organization. Degree essential, and at least 4 years in design, programming and implementation of business systems on large scale computers. Advanced degree desirable.

Call collect or send resume to

Mr. Dan McConnell

Phone: (516) LR 4-3291

## SPERRY

### GYROSCOPE DIVISION

SPERRY RAND CORP.

GREAT NECK, NEW YORK 11020

An Equal Opportunity Employer M/F

# Senior Software Specialist

Management position requiring the ability to provide overall systems direction in the development of advanced computer software.

The individual selected will have recent experience in large scale military digital systems from conception to delivery.

Salary open, depending on individual's qualifications in managing state-of-the-art activities.

Company: Southern California aerospace.

Forward resume in complete confidence to:

S/A BOX 801

an equal opportunity employer M/F

module built specially to do the Cooley-Tukey algorithm, the macro algorithm module is still many times faster than a central processor program. Further advantages are realized by freeing the mainframe for parallel operation.

The device described in this paper is a compromise between a general purpose computer and a single purpose algorithm module. It will effect a savings of time in computing a wide variety of matrix and signal processing problems. By making the device *peripheral*, the module can then be added to scientific oriented systems where its effects would be most helpful. ■

### References

- 1] J. L. Shanks, "Recursion filters for digital processing" *Geophysics*, vol 32, pp. 33-51, February 1967.
- 2] J. L. Shanks, Thomas W. Cairns, "Use of a Digital Convolution Device to Perform Recursive Filtering and the Cooley-Tukey Algorithm", *IEEE Transactions on Computers*, vol C-17, pp. 943-949, October 1968.
- 3] G-AEC Subcommittee on Measurement Concepts, "What is the fast Fourier transform?" *Proc. IEEE*, vol 55, pp. 1664-1674, October 1967.
- 4] H. D. Helms, "Fast Fourier transform method of computing difference equation and simulating filters", *IEEE Trans Audio and Electroacoustics*, vol AU-15, pp. 85-90, June 1967.
- 5] C. M. Rader and B. Gold, "Digital filter design in the frequency domain", *Proc. IEEE*, vol. 55, pp. 149-171, February 1967.
- 6] J. W. Cooley and J. W. Tukey, "An algorithm for the machine computation of complex Fourier series," *Math Comp.*, vol 19, pp. 297-301, April 1965.

Fee Paid

\$10,000

to

\$40,000

**SYSTEMS  
and  
PROGRAMMING  
SPECIALISTS**

MIS Managers •  
Systems Managers  
• Systems Analysts •  
Programmers Analysts •  
Programmers

**FORTUNE**  
Personnel Agency, Inc.

(212) MU 2-8600  
505 Fifth Ave.  
New York, N. Y. 10017



# TROUBLE-TRAN PRESENTS XTRAN'S ADVENTURES IN FORTRAN



By GEORGE N. VASSILAKIS

Send your ANSWER to the problems posed here in each issue to:

TROUBLE-TRAN EDITOR

## software age

P. O. Box 2076

2211 Fordem Ave., Madison, Wis. 53701

You can also profit by submitting PROBLEMS for this feature. If your problem in FORTRAN programming is selected for use in this feature, you will receive \$50.00

### TROUBLE-TRAN'S Objectives:

1. To have fun.
2. To promote USA Standard FORTRAN by pointing out differences and inconsistencies of existing FORTRAN Compilers.
3. To alert programmers to the physical limitations of hardware.

# PROBLEM OF THE MONTH

## Problem 16: Illegal use of the DO loop control variable

Submitted by J. Kittle

```

DO 10 I = 1,10
  I = I + 1
  WRITE (6,5) I
  5 FORMAT (I5)
  10 CONTINUE
STOP
END

```

What values of I will be printed?

This problem clearly violates the FORTRAN rules; yet, many compilers don't bother to give a diagnostic. The author claims that this problem generated four different results on four different computers. On one computer the same problem coded on three different languages (FORTRAN, BASIC, AID) generated three different answers. Also, eleven computers executed this program without any diagnostics. What did your computer do?

Dear TROUBLE-TRAN Reader:

This column is now in its second year and, like most programs you and I write, it must be revised and improved.

The first and most important change is that, from now on, the answer to a problem will appear on this column two months after the problem is published. This is necessary, in order to be able to read your comments before I write the answers. Writing the answer two weeks before a problem is published does not even give me the opportunity to comment on typographical errors.

A few months ago, I had asked for volunteers to test the problems before they are published and I received many offers. Unfortunately, the task of corresponding with volunteers and meeting publication deadlines is time consuming (more time than I can spare). My job will be simplified and the answers will always be correct if I wait until I read the mail.

Another change which may disappoint some of you is the termination of prizes for correct solutions. This decision resulted from several complaints of readers who always receive their copy of Software Age late. In fact, many times I receive mail from readers several days before I receive my copy of this magazine.

Instead of first and second prizes, this column will recognize those who send correct solutions by publishing their names. You may still profit by submitting problems which are worth \$50.00 each when published. For the next few months, I would like to see more problems similar to last month's problem on "Prime Numbers".

### USA Standard FORTRAN

Those of you who are interested in purchasing a copy of this document should write to USA Standards Institute, 10 East 40th Street, New York, N. Y. 10016 and inquire about the following documents:

X3.9-1966 FORTRAN

X3.10-1966 Basic FORTRAN

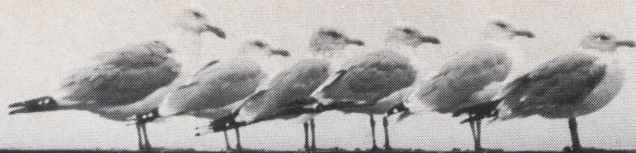
Sorry I do not know the price. I received my copy free from a CDC representative.

XTRAN

### TROUBLE-TRAN Winners:

- \$25.00 for submitting May problem: R. A. Howell, The Dow Chemical Company, BIS-ADS, Hopkins Building, Midland, Michigan 48640.
- \$25.00 first prize for May: A. I. Wasserman, The University of Wisconsin, Computer Sciences Department, 1210 West Dayton Street, Madison, Wisconsin 53706.
- \$15.00 second prize for May: F. E. Miller, 1624 Alabama Street, Lawrence, Kansas 66044.
- \$25.00 for submitting June problem: J. S. Blanchard, General Electric Co., Ordnance Systems, Room 2468, 100 Plastics Ave., Pittsfield, Mass. 01201.
- \$25.00 first prize for June: E. S. Jenkins, The Pennsylvania State University, Computer Building, University Park, Pennsylvania 16802.
- \$15.00 second prize for June: Mary E. Rafter, State of Michigan, Department of Public Health, 3500 N. Logan, Lansing, Michigan 48914.





**Don't just sit there.  
Take off...with RCA.**



If you don't think your progress is keeping pace with your potential come to RCA.

We'll give you a chance to get involved in hardware design, and work on a variety of important projects.

Salary? We offer rewards and advancement commensurate with your skills.

Write to us for interview if you've had experience in language processors, control systems, operating systems, utility systems, communications systems, micro-programming, sales, product planning,

central processors, batch terminals, communications controllers, random access, magnetic storage, advanced tape devices, etc.

Contact Mr. T. A. Beckett, Dept. SW-10, RCA Information Systems Division, Bldg. 202-1, Cherry Hill, New Jersey 08101. We are an equal opportunity employer. During ACM Conference call RCA in San Francisco at (415) 771-0745.

**RCA**

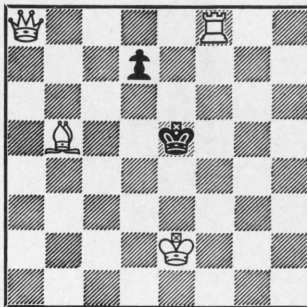


# CHECKMATE

by  
**GEORGE N. VASSILAKIS**  
 TRW SYSTEMS GROUP

## Problem 18

A. BELLAS



White Mates in Three

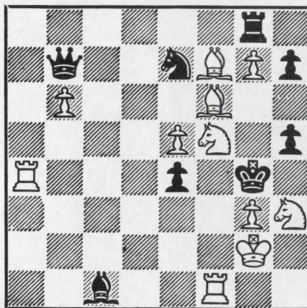
## THE MINI-MINIGAME

According to Stephen E. Lowe of Van Nuys, California, this game was played in Philadelphia, in 1936.

| ARNOLD<br>(White) | HANAUER<br>(Black) |
|-------------------|--------------------|
| 1. P-Q4           | N-KB3              |
| 2. P-QB4          | P-K4               |
| 3. P-Q5           | B-B4               |
| 4. B-N5           | N-K5 !             |
| 5. BxQ ?          | BxP mate           |

## Problem 19

E. HOLLADAY



White Mates in Two

## World Champion Paul Morphy (1858-1859)

Morphy, the greatest USA chess player that ever lived, was born in New Orleans on June 22, 1837. He learned the game from his father at the age of ten, and two years later he was able to beat his uncle, the chess king of New Orleans.

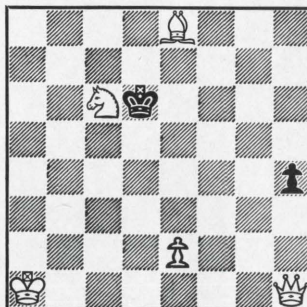
At the age of twenty he went to New York, where he gained first place in the first American chess championship. The following year he traveled to Europe, where he defeated every opponent he played, including Adolf Anderssen. His greatest disappointment was the refusal of Staunton to play him.

Morphy returned to New Orleans and declared his brief but brilliant chess career closed, at the age of twenty one. After trying unsuccessfully to take up law (his father was a judge), Morphy gradually relapsed into a state of seclusion and eccentricity, and died of congestion of the brain at the age of forty-seven.

During his illness, Morphy imagined himself persecuted by people and suspected his brother-in-law of trying to poison him. He would see no one except his mother. His mode of life was a daily walk and going to the opera alone, never missing a performance. He would only talk about his father's fortune (\$146,162.54), and the mention of chess was sufficient to irritate him.

## Problem 20

G. DOBBS



White Mates in Three

## Solution to Problem 15

1 N-R8,K-Q3; 2 K-Q4,K-B3; 3 Q-Q5 mate

## Solution to Problem 16

1 Q-R6! if 1 . . . . , PxQ; 2 NxP mate  
 if 1 . . . . , P-N4ch; 2 QxP mate

## Solution to Problem 17

1 R-Q8ch,RxR; 2 R-B8ch,KxR; 3 N-N6 mate  
 if 2 . . . , K-R7 or K-B7; 3 P-N6 mate



Make Profits for Your Company  
and MORE MONEY FOR YOURSELF!

## ... ENROLL in North American's New HOME STUDY COURSE in Systems & Procedures

Sponsored by the  
ASSOCIATION FOR  
SYSTEMS MANAGEMENT

We'll Send You This Fact-Filled  
CAREER OPPORTUNITY BOOKLET

FREE!



North American Correspondence Schools has guided thousands of ambitious men and women to success through its accredited Home-Study Courses in many fields.

NOW NORTH AMERICAN ANNOUNCES its new 50-lesson Course in Systems & Procedures. Written and edited with the help of acknowledged leaders in the systems and procedures field and sponsored by the Association for Systems Management, this is a complete, comprehensive, authentic and up-to-date correspondence course on systems and procedures.

The cost is less than \$400.00 cash. Low monthly tuition payment plans available. If you are seriously interested in investigating this Course, write for FREE fact-filled CAREER OPPORTUNITY BOOKLET, plus full details on North American School of Systems & Procedures. There's no cost or obligation, now or ever. No salesman will call. Write today!

Accredited Member, National Home Study Council.



SPECIAL DISCOUNTS  
AVAILABLE for

Multiple Enrollments from the same Company

NORTH AMERICAN SCHOOL OF SYSTEMS & PROCEDURES  
Dept. 3638, 4401 Birch Street, Newport, California 92660

For more information, circle No. 2  
on the Reader Service Card

## Programmers— We know where you can find a better job.

Work in the most dynamic EDP community in the country where the nation's top companies are hungrily looking for skilled programmers. Like you.

Personal and professional growth is rapid. Salaries are high and the diversification of opportunities is unsurpassed.

We know, because Drew is New York's leading EDP placement specialist. We work closely with over 300 national companies headquartered here who have exciting programming and systems openings. Applications programmers, systems programmers, software programmers—are the people these companies need. Drew has been chosen to supply them with the necessary talent.

Send us your resume and we'll give you the inside story on all of these openings.

Do it today. This could be the start of bigger and better things.

### DREW

Personnel Placement Center  
160 Broadway, New York, New York 10038  
Phone (212) 964-8150

INVCTL: PROCEDURE; DEC  
MAST OUTPUT) BLOCK (FI  
WORK, 2 PARTNO CHAR.  
(12), 2 (The PL/1, RQ)  
YTDSALE FIXED (8), 2 COD  
CHARACTER (7), 2 TCODE  
IS (4), LABEL; INVCTL: PRO  
INPUT, NEWMAST OUTPUT

David Bernstein

### Purpose

The purpose of this article is to explain the functions and capabilities of the PL/1 pre-compile time facilities. The main emphasis will be placed on describing how pre-compile time facilities can be used to solve specific classes of programming problems. The technical details of the operation of the preprocessor will be kept to a minimum. The reader is referred to the reference for more details.

Judicious use of preprocessor capabilities can result in many advantages to the programmer. Initially, the dangers of handling large decks of cards can be avoided because entire programs can be placed on a source library, and can be de-bugged by changing individual program statements on the library. This saves the programmer from the usual dangers involved in handling card decks. Coding time can also be saved because common routines and record formats can easily be included in any program once they have been written and placed on the library. Under second generation computer concepts the programmer wasn't concerned with the size of his program as long as it was small enough to fit into the machine. However, the machine can be used more efficiently by writing smaller programs so that, in multi-programming, more jobs can

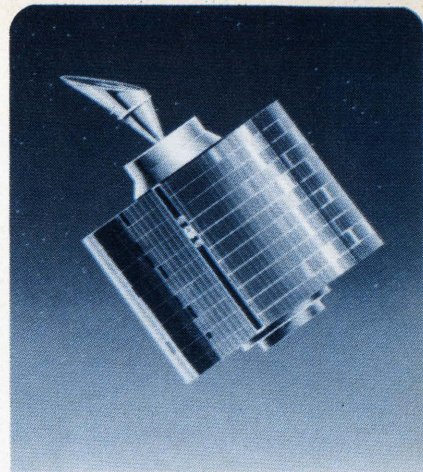
be running simultaneously. The preprocessor allows you to compile only those portions of your program that are necessary for a particular run. This is especially applicable in the case of writing utility programs. In addition, the use of pre-compile time facilities opens up an entirely new way to write programs and encourages programmers to come up with imaginative ways to solve problems.

### Description of the Preprocessor

The preprocessor is a program that operates on source text before the text is compiled by the processor stage of the compiler. At the preprocessor level the user's source coding is scanned for special expressions called preprocessor statements. These special statements cause the original source coding to be altered in a way specified by the programmer. The altered text then serves as input to the second stage which is the regular compilation. The preprocessor scans each character of the input source coding looking for special pre-compile time statements. As long as these special statements are not encountered, the original coding is undisturbed. When a pre-compile time statement is encountered, it is executed right there at the preprocessor stage. This execution can cause the scanning of the source program to be altered in one of two ways:



RE (OLDMASTINPUT, NEW  
 D, 432,8), PFILE OUTPUT, 1  
 TER (7), 2 DESCR CHAR  
**PREPROCESSOR:**  
 ED (5), TQ FIXED (6),  
 XED, 1 TRANS, 2 TNUMBER  
 ED, 2 TQ FIXED (5), CODE  
**n programming**  
 DURE; DECLARE (OLDMAST  
 BLOCK (FIXED, 432,8), PFIL



**CAREER OPPORTUNITIES**



COMSAT is the privately owned U. S. corporation that operates a global system of communications satellites in partnership with nearly 70 foreign countries.

COMSAT is also creating satellite systems of the future that will interest computer hardware and software professionals who are looking for exceptional advancement opportunities.

During the remainder of 1969, COMSAT expects to have career openings in the following areas:

- **Systems Programmers**, with three or more years experience in systems generation installation/modification and IBM 360/50 usage or above . . . familiarity with teleprocessing devices such as 2780, 2260, 1050 or teletype units; BS in Mathematics required
- **Programming Analysts**, with two or more years experience in developing management information systems, particularly commercial, on an IBM 360/OS. BA. in Business Administration or Accounting preferred
- **Scientific Applications Programmers**, with three or more years experience in providing computer support of research and development programs; MS or PhD in mathematics, computer sciences or celestial mechanics

EDP professionals looking for challenging positions in a firm with growing world-wide communications network are encouraged to inquire.

Write for "Professional Opportunities at COMSAT" or contact Mr. Paul G. Gaffney, Manager of Staffing.

**COMSAT**

Communications Satellite Corporation  
 950 L'Enfant Plaza South, S.W.  
 Washington, D. C. 20024  
 (202) 554-6063

An Equal Opportunity Employer

For more information, circle No. 3 on the Reader Service Card

1. The preprocessor may be instructed to continue its scan from a different point in the program. This can result in one of two possible situations. In the first place source text that was already scanned can be re-scanned and can be included in the program many times. In the section called *Using the Preprocessor* there is an example illustrating this point.

The second result that is possible when a re-scan takes place is that portions of the source text may be skipped for a particular run of a program. For example, a multi-purpose program could be designed to perform more than one function. If the program size is to be kept to a minimum only the needed sections of the program are compiled. This type of operation is called conditional compilation.

2. Replacement activity may be initiated. This capability can best be described by the use of an example.

1. % DECLARE A CHARACTER;
2. % A = 'B + C';
3. X = A;

The first statement is a preprocessor DECLARE statement that indicates that A is eligible for replacement wherever it is encountered in the program (all preproc-

essor variables must be declared). The percent sign is the preprocessor indicator. Statement 2 is a preprocessor assignment statement which assigns the character string 'B + C' to A.

The third statement is a non-preprocessor statement and is not executed at this time. However, because this statement contains a preprocessor variable (A) the current value of A will replace it in that statement. Statement 3 will then appear in the compiled listing as:

$$X = B + C;$$

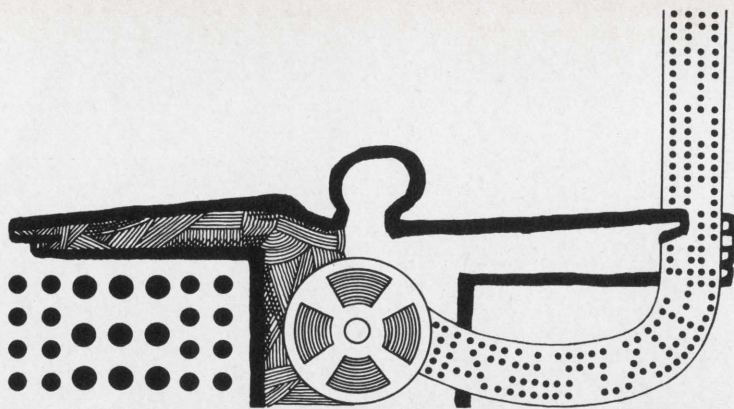
Once preprocessor statements have been evaluated, they are blanked out and appear in the compiled listing as blank lines.

To summarize thus far, the preprocessor performs two functions, conditional compilation of parts of a program, and the replacement of variable names by some value generated at pre-compile time.

**Using the Preprocessor**

There are many preprocessor operations available and the syntax of some are similar to the regular PL/I operations; however, the results of these manipulations are nothing more than changes in the status of the scanning and outputting of source text. The rest of this article





## PROGRAMMERS SYSTEMS AND BUSINESS

Systems programming is in three areas of application: 1) Develop on-line systems for hospital data management. Must have IBM 360/DOS and assembly language background; 2) Perform test data programming on advanced aerospace projects. Must have CDC 6000 experience; 3) Coordinate between programming and manufacturing organizations. Must have A.P.T. systems experience. BS in math or engineering is required for all above positions. Business programming: Develop COBOL programs for hospital business offices. Must have degree and two years' experience.

For further information please write H. W. Bissell, Professional Placement Manager, P. O. Box 504, Sunnyvale, California 94088. An equal opportunity employer.


**LOCKHEED**  
MISSILES & SPACE COMPANY  
A GROUP DIVISION OF LOCKHEED AIRCRAFT CORPORATION

## It's free. The new 1969 Edition. Our National Computer Salary Survey and Career Planning Guide

The all new 1969 Edition of Source Edp's Computer Salary Survey and Career Planning Guide is now available containing up-to-the-minute information vital to every computer professional. Subjects include:

- The annual Source Edp Survey of Computer Salaries broken down by 28 separate levels of professional and managerial classifications ranging up to \$75,000.
- A comprehensive analysis of current trends in computer employment opportunities.
- A study of information processing development within major industrial classifications including user and non-user industries.
- An examination of the techniques and strategy in career planning.

All of this information has been compiled and edited by the people at Source Edp—the largest nationwide recruiting firm devoted solely to the computer field. To receive your free copy of the 1969 Edition of Source Edp's Computer Salary Survey and Career Planning Guide, circle the reader inquiry card. Or, to speed delivery, write directly to the Source Edp office nearest you.

source  edp

**Atlanta**—William S. Barnett, 11 Corporate Square (404) 634-5127  
**Chicago**—David B. Grimes, 100 S. Wacker Drive (312) 782-0857  
**Dallas**—Paul K. Dittmer, 7701 Stemmons Freeway (214) 638-4080  
**Detroit**—Robert C. Stevens, 24500 Northwestern Hwy., Southfield, Mich. (313) 352-6520  
**Houston**—George P. Dyer, 2300 W. Loop S. (713) 621-6070  
**Los Angeles**—Wayne G. Emigh, 3470 Wilshire Blvd. (213) 386-5500  
**Minneapolis**—Fred L. Anderson, 801 Nicollet Mall (612) 332-8735  
**New York**—Edward R. Golden, 1414 Ave. of the Americas (212) 752-8260  
**Palo Alto**—Gordon M. Best, 525 University Ave. (415) 328-7155  
**Philadelphia**—George D. Ramming, 1700 Market Street (215) 665-1717  
**St. Louis**—Robert T. Trumbull, 130 S. Bemiston, Clayton (314) 862-3800  
**San Francisco**—Richard O. Clark, 111 Pine Street (415) 434-2410

For more information, circle No. 4 on the Reader Service Card

will show how the pre-compiler is used in specific situations.

Perhaps the simplest use of the preprocessor is for incorporating strings of source text into a program. By using the standard Operating System Utilities, it is very easy to create and maintain a Partitioned Data Set of source text. Each group of source statements is given a name and may be used by any programmer. The important thing to keep in mind is that the source statements loaded onto a library do not have to be complete programs. By the use of a simple %INCLUDE PGNAME' the indicated text is brought into the program at the specified point. For instance, all of a department's record formats could be added to the library and with one statement the appropriate format could be included in the program. For example, suppose we have a format called "RECORDA" that has three elements:

1. RECORDA,  
2 CUSTOMER# CHAR (4),  
2 ACCT-RECEIV FIXED  
(6,2),  
2 DATE CHAR (4),

With one statement the entire format can be included into any program:

```
PROCA: PROCEDURE:
  DECLARE
  :
  :
  :
  % INCLUDE RECORDA;
  :
  :
  :
```

The following source program is generated:

```
PROCA: PROCEDURE:
  DECLARE
  :
  :
  1 RECORDA,
  2 CUSTOMER# CHAR
  (4),
  2 ACCT-RECEIV FIXED
  (6,2),
  2 DATE CHAR (4),
  :
  :
```

This simple example shows a very short format being introduced into the program, but the kind of text that can be included isn't limited to



record formats or to size. Any valid (or invalid for that matter) PL/1 text is permissible, since the pre-processor only checks for unmatched quotes and unmatched comma delimiters.

In addition to record formats being included in a program, general purpose routines that have to be tailor-made are especially appropriate. An example of such a routine is a heading routine. The author has written a routine that can be included in any PL/1 program and performs the following functions:

1. Opens the standard print file.
2. Writes heading and footing lines when the end of page is reached.
3. Automatically maintains and updates the page count.

All that the user supplies to the program is any heading or footing lines that he wants printed. If none are supplied standard ones are printed. The significance of this type of routine is very simple. Those types of functions are done in practically every program. By writing it once and allowing other programmers to

use it, countless programmer hours wasted in duplication are saved.

Another very useful function of the compile time operation is that of substitution. This ability is especially useful when one is writing general purpose utility program. For instance, let us say that we have a program that prints the value of any field from a record. The field and the length of the field are supplied at pre-compile time. The following shows how the program looks before the preprocessor operation takes place:

```

PROCA: PROCEDURE;
% DECLARE VAR1 CHAR,
    VAR2 FIXED,
.
.
% VAR1 = 'FLDA';
% VAR2 = 5;
.
.
PUT EDIT (VAR1)
    (A(VAR2));

```

Notice that all of the preprocessor statements have been prefixed with a percent sign. This informs the pre-processor that these statements must

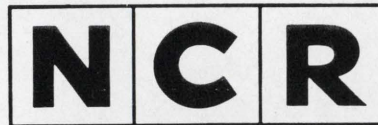
be evaluated at pre-compile time. Notice, also, that any pre-compile statement must first be declared and that the only two types of variables that are allowed are fixed decimal and character. The length of the variables is not specified. The character variables are of varying length, and the decimal variables have the default length (5,0). The values are assigned to the two variables as indicated in the program. When the print statement is encountered, the current values of VAR1 and VAR2 are substituted in the statement. In the source program the statements that contained pre-compile time variables show up as blank lines and the substituted values show up in the program:

```

PROCA: PROCEDURE;
.
.
.
.
PUT EDIT (FLDA) (A(5));

```

This technique is extremely useful in writing multi-purpose programs



**CENTURY SERIES**  
Dayton, Ohio

1. **APPLIED PROGRAMMING DEVELOPMENT:** Programmers and systems analysts experienced in on-line, commercial, industrial, financial or retail applications programming. Positions involve working on third generation equipment. A minimum of one year programming or systems experience is required.
2. **COMPETITIVE PRODUCT EVALUATION:** This position requires preparation of reports concerning the capabilities of competitive computer hardware and software; technical sales assistance to the NCR field Marketing force; analysis of the computer marketplace of the future and development of strategies to take advantage of the market. An ideal background will include three to six years' experience in marketing, either in sales or systems with a vendor, or experience directly in the evaluation area. The successful candidate will have the ability to perceive salient features of computer systems and relate them to NCR products.
3. **FIELD SYSTEMS:** Field analyst with pre and post sales responsibilities to a number of varied installations. The position is in hardware/software technical support of third generation mixed tape and disc. Experience in magnetic file computer most helpful. Intermediary in all major software problems from initial presale demonstration through the debugging stages. The position will carry full responsibility for the software support of the new Century Series and 315 Systems.
4. **MANAGEMENT INFORMATION SYSTEMS SPECIALIST:** MIS specialist needed to formulate and direct the implementation of information retrieval systems for a major division of NCR. Candidate will have previously directed the development of such systems and been a direct contributor to their design. He will be well versed in all phases of file structure and list processing techniques and be capable of training and directing others in these activities. A degree is required, preferably an advanced technical degree. A minimum of five years' experience necessary in MIS development with large computers.
5. **EXECUTIVE SOFTWARE SYSTEMS PROGRAMMERS:** Junior and senior level persons to work in the following areas: design and implementation of advanced time sharing, multi-programming, and multi-processor operating systems executives. Design and implementation of on-line languages, file systems, and compilers to operate exclusively in a time shared environment. You will be working in a free thinking environment with hands on hardware available. Prefer a B.S. degree or two years' or more systems software experience with large scale hardware.
6. **ENGINEERING DEVELOPMENT PROGRAMMERS:** Software to support state-of-the-art remote terminal design, development and testing. Program design for latest technology equipment. Programs will be written in several languages and executed on various computers. In addition to terminal support, requirements exists in engineering applications. Minimum of one year experience. Previous experience with remote terminal devices is especially useful, although not essential.
7. **EDP PROGRAMMING WRITERS:** Prepare technical manuals and sales material on new or modified systems, devices, equipment or installations. The material is to be used primarily by Customer Service Technicians and Field Personnel for training, reference, education and maintenance. Degree plus 2-3 years' experience in EDP writing.

For confidential consideration, forward resume including salary requirements to:

**Mr. Ronald L. Lauterbach**  
Executive & Professional Placement  
**The National Cash Register Company**  
Main & K Streets  
Dayton, Ohio 45409

AN EQUAL OPPORTUNITY EMPLOYER (M/F)



Programmers and systems analysts...

## Univac: Where you can help make the world a little bit better


There is no pat solution to the problem of our ghettos. But concerned governmental agencies and private industry, with the help of UNIVAC® computers, are making steady progress toward a healthier environment in the depressed Watts area of Los Angeles.

One of the world's largest architectural and engineering firms is Daniel, Mann, Johnson and Mendenhall. The company uses a sophisticated UNIVAC computer system to supply its planners with information on population density, housing data and other facts in fractions of the time that used to be required. As a result, Watts residents are nearing a residential and business environment dramatically improved from conditions only a short time ago.

We at Univac know that our kind of people want to feel that they are helping find new solutions to the world's social problems. So you won't find yourself doing busy work here. You will be occupied with meaningful projects.

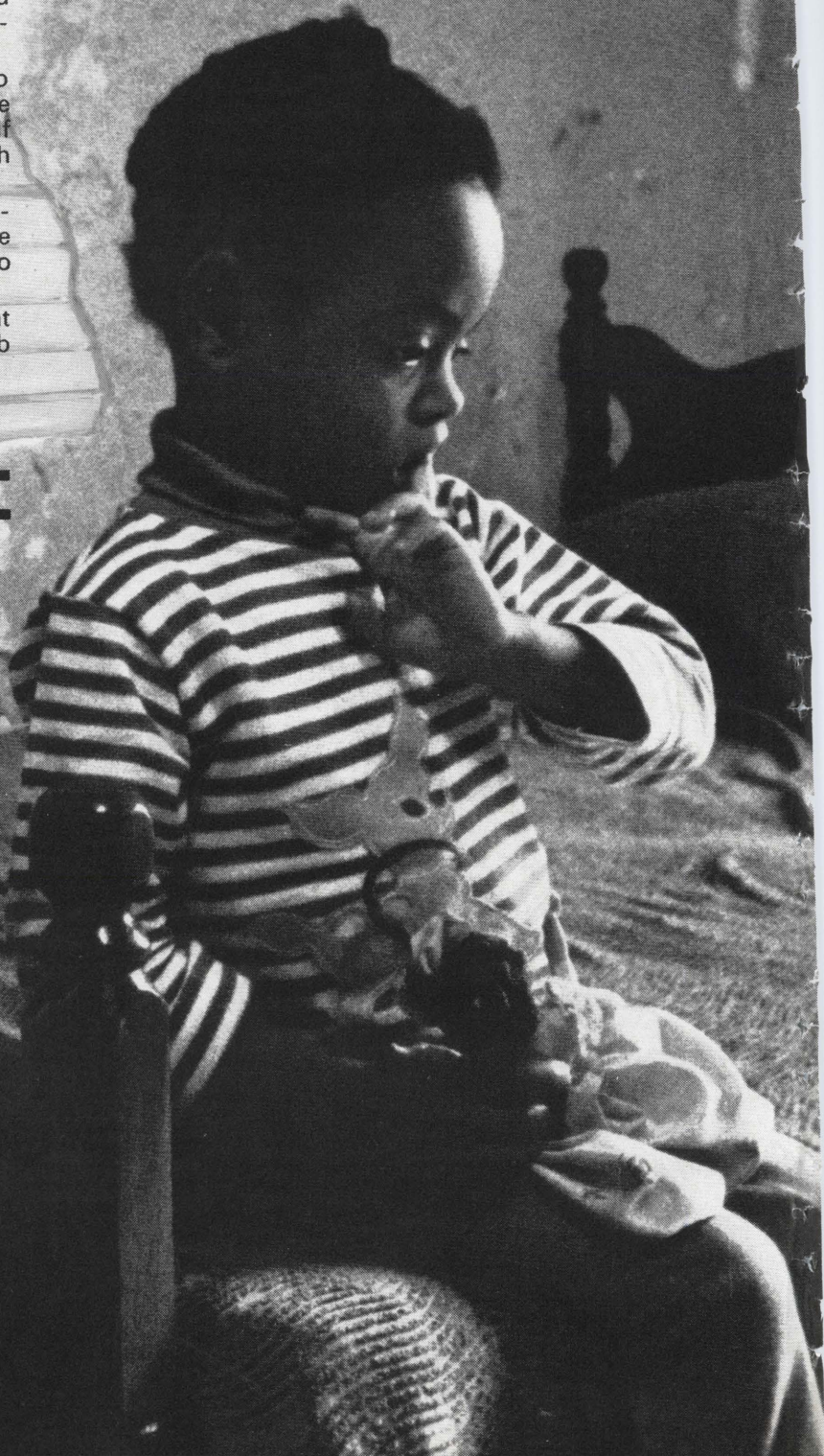
You will be making a real contribution. You will receive compensation and promotion as fast as you are ready, of course. But your ultimate reward will go beyond purely material matters.

If we sound like your kind of company, we know that you are our kind of person. Please look over the job opportunities on the facing page.

 SPERRY RAND

UNIVAC

*An Equal Opportunity Employer M/F*





because, when high level languages are used, record fields are usually referred to by the use of a symbolic name rather than by relative position from the beginning of the record as is the case when using AUTO-CODER or BAL.

The use of conditional statements at the preprocessor level allows the user to compile pieces of his program to satisfy specific situations. This ability makes the source program smaller which in turn can help increase throughput when operating in a multi-programming mode. For instance, suppose a program has two routines, one for printing a record and one for writing a tape copy of the record. The user has the option of either getting tape output, printer output or both. If one of the options is not required, there is no need to compile that particular routine into the program. For this example suppose that all the user wanted was printed output.

```

PROCA: PROCEDURE;
% DECLARE (TAPE, PRINT)
  CHAR;
% TAPE = 'NO';
% PRINT = 'YES';
.
.
% IF TAPE = 'NO' % THEN
  % GO TO NOTAPE;
TAPERTN:
.
.
% NOTAPE;;
% IF PRINT = 'NO' % THEN
  % GO TO NOPRINT;
PRINTRTN:
.
.
% NOPRINT;;

```

When the first preprocessor conditional statement is encountered, it is evaluated and since the condition is true, a branch is made to the preprocessor label % NOTAPE. What this means is that for this running of the program the tape routine will not be compiled. Since the next statement turns out to be false, the preprocessor falls through and therefore scans and outputs all of the statements in the print routine for eventual compilation. The final program that is compiled will look like this:

```

PROCA: PROCEDURE;
.
.
.
PRINTRTN:
.
.

```

Perhaps the most powerful ability of the preprocessor is that of actually generating source text. One way this is accomplished is through the use of the compile time DO loop. Let us first consider a very simple application. Suppose we wanted to generate a particular statement a different number of times depending on the program requirements. Every time that the program was run, a number 'CNT' would be supplied to the program indicating the number of times that the statement is to be generated. The preprocessor coding would be as follows:

```

% DECLARE (I, CNT) FIXED;
% CNT = 3;
% DO I = 1 TO CNT;
  Z (I) = X (I) + (I);
% END;

```

For this run, the statement in the loop would be generated three times since 'CNT' was set equal to 3. The following statements would be generated:

```

Z(1) = X(1) + Y(1);
Z(2) = X(2) + Y(2);
Z(3) = X(3) + Y(3);

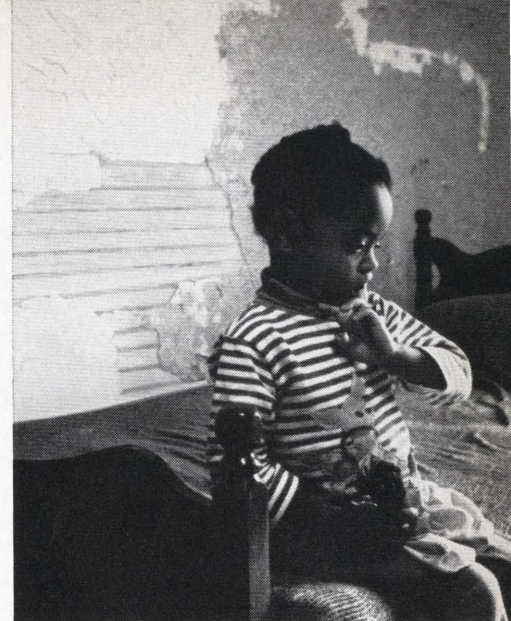
```

The above is fairly trivial example of a DO loop. To get a little more sophisticated, suppose we had a program that could print up to five fields from a record, but the actual number of fields is a variable that is supplied by the user. This variable is again called 'CNT'. The names of the fields to be printed out are defined to the program as 'FLDx' where x can be any number from 1-5. In this example we make use of the concatenate operator and the SUBSTR built-in function which are both perfectly legitimate operators to use at the preprocessor level. For this particular run, we will print 3 fields out: 'NAME', 'ADDRESS', 'ACCT #'.

```

% DECLARE (I, J, CNT) FIXED
  (FLD, K, L, FLD1, FLD2, FLD3,
  FLD4, FLD5) CHAR;
% CNT = 3;
% FLD1 = 'NAME';

```



Programmers and systems analysts . . .

## Join the winning team in computer technology

*Openings in all levels for programmers and analysts: Maintenance and diagnostics, radar systems, systems simulation, data reduction and scientific applications.*

**Mr. V. C. Bruette**  
Univac Employment Manager, Dept. SA89  
36 State Highway 10  
Hanover, New Jersey 07936

*Major computer systems development in St. Paul, Minnesota.*

**Mr. W. R. Short**  
Univac Employment Manager  
Data Processing Division, Dept. SA89  
2276 Highcrest Drive  
Roseville, Minnesota 55113

*Systems analysts and sales representatives for branch assignments throughout the United States*

**Mr. John Shelsy**  
Univac Employment Supervisor  
Data Processing Division, Dept. SA89  
P.O. Box 8100  
Philadelphia, Pa. 19101

*Systems analysts with account responsibilities and sales representatives.*

**Mr. Dale Ellis**  
Univac Employment Manager, Dept. SA89  
1901 Avenue of the Stars  
Suite #940  
Los Angeles, California 90067

*Advanced software development on commercial systems and technical marketing support at Univac world headquarters.*

**Mr. L. G. Holliday**  
Univac Employment Manager  
Data Processing Division, Dept. SA89  
P.O. Box 8100  
Philadelphia, Pa. 19101

*Programmers and analysts for Apollo and other advanced systems.*

**Mr. L. J. Miller**  
Univac Employment Manager, Dept. SA89  
2121 Wisconsin Avenue  
Washington, D.C. 20007

*Openings in all levels of programming for Navy ASW programs.*

**Mr. John Spearing**  
Univac Site Manager, Dept. SA89  
P.O. Box 147  
Warminster, Pa. 18974



# PROGRAMMERS SYSTEMS ANALYSTS

## Nationwide

With the recent introduction of Time-Sharing to our unique Total Information Market Evaluation Systems (TIMES) Input, Inc. through our staff of trained consultants is able to bring the complex and ever-changing computer community into remarkable focus. In the development stage for nearly a year and now fully implemented TIMES can lock in the myriad complexities of your specific career requirements with a speed and accuracy unparalleled in the field.

Fields covered include digital hardware design, systems analysis and programming of software, management information systems, and a variety of sophisticated scientific and commercial applications. We welcome your inquiries. Contact Mr. Lincoln Bouvé or Mr. James Linker at 202/298-7510 for additional information or submit resume in confidence. Client companies assume all fees.

## input, inc.

815 connecticut avenue, n.w.  
washington, d.c. 20006

e.o.e./mf

suite 1200

For more information, circle No. 5  
on the Reader Service Card

## Announcing

A nationwide computer applications organization providing both business and scientific data processing services on every level.

### COMPDATA Services Corporation

An  
Averbach/  
CDI organization

### SYSTEMS ANALYSTS PROGRAMMERS COMPUTER OPERATORS

Investigate the challenges and financial rewards that COMPDATA can offer you. Our opportunities are nationwide and offer extremely attractive compensation. Your resume is invited or call collect.

R. N. Cherwinski  
(215) 569-2200  
for further details.

### COMPDATA Services Corporation

Dept. SA-4  
Executive Offices  
4 Penn Center Plaza  
Philadelphia, Pennsylvania 19103  
An Equal Opportunity Employer

```
% FLD2 = 'ADDRESS';
% FLD3 = 'ACCT #';
```

```

:
:
% K = '123';
% DO J = 1 TO CNT;
% L = SUBSTR (K, J, 1);
% FLD = 'FLD' || L;
PUT EDIT (FLD) (A(20));
% END;
```

The following source statements will be generated:

```

:
:
PUT EDIT (NAME) (A(20));
PUT EDIT (ADDRESS)
(A(20));
PUT EDIT (ACCT #) (A(20));
```

The loop is performed 3 times because 'CNT' was initialized to 3. The operation of the SUBSTR operator is as follows: From the string K assign to L the first character beginning at the jth position of K.

The first time through the statement % FLD = 'FLD' || L; is immediately executed since it is a preprocessor statement. Since L initially has the value 1 the value of % FLD is equal to 'FLD1'. A scan of the PUT EDIT statement then takes place. Since FLD is a preprocessor variable it is immediately replaced by its value 'FLD1'. The statement is then re-scanned and the value of 'FLD1' which is 'NAME' is replaced in the PUT EDIT statement. A scan of the expression then takes place. Now, since 'FLD1' is a preprocessor variable, its value 'NAME' is replaced in the expression. The first iteration is now complete, and the

value of J is incremented, and the second iteration begins.

## Conclusion

The above examples give the flavor of what the capabilities of the preprocessor are. They have by no means presented a complete range of what can be done by using the full PL/1 language capabilities of the preprocessor. As alluded to in the last example, many different PL/1 operations can be performed at pre-compile time, and one or more can be combined into one expression to perform complex operations. However, to re-emphasize, the most powerful and simplest preprocessor operations are substitution and conditional compilation of sections of a program. By doing these two operations alone the programmer can certainly use PL/1 with a great deal more power compared to using the language without the preprocessor. The only requirement for the use of the compile time facilities is that the programmer has to shake off his old ways of doing things and begin to expand his thinking into a new and more flexible dimension of programming.

## Reference

IBM System/360 PL/1 Reference Manual, C28-8201-1, IBM Corporation, White Plains, New York.

*David Bernstein received an MBA from the Bernard M. Baruch School of Business Administration in 1969. Since that time, as President, he has managed and directed the activities of Advanced Computer Software Services, Inc. For three years before this, he was a Senior Associate Analyst at IBM. Bernstein has, above all, extensive machine and language abilities.*



## EDP-SYSTEMS

WE SPECIALIZE IN CAREER CORRECTION

### ARE YOU "UNDERED"?

UNDER . . . PAID or UNDER THE WRONG BOSS . . . UNDER THE  
WRONG CLIMATE or UNDER PROMOTED  
UNDER UTILIZED or UNDER THE WRONG HOURS . . . UNDER THE  
WRONG POLICIES . . . or just "UNDERED"?  
FOR "OVERING" . . . CALL (215) 839-1500

### LAWRENCE PERSONNEL

29 Bala Avenue, Bala Cynwyd, Penna. 19004  
(Philadelphia's Main Line Suburb)

FEE PAID BY CLIENT COMPANIES • NO CONTRACTS • ALWAYS CONFIDENTIAL



# personal lines

**Gerald G. Wisz** and **Edward N. Murray** have been elected Assistant Vice Presidents of Marine Midland Services Corporation . . .

**Charles G. Abbott** has been appointed Vice President in charge of the Consulting Services Division of Data Management Services, Inc. . . . Freas-Rooke Computer Center at Bucknell University has appointed **George L. Weber** as a systems analyst.

**Larry Vehorn, Marvin Leeger, Larry Serbie** and **Errol Rovner** have all been promoted to Director, Management Services, at Wellington Computer Systems Incorporated . . . Commed, Inc., a subsidiary of Compress, has named **John S. Williams** as Vice President and Technical Director . . . **Joseph F. Cashen** has been named Engineering Director for Industrial Controls Systems at Honeywell's Computer Control Division in Framingham . . .

**Max Muir** has joined Information International as senior project engineer, **Richard J. McQuillin** as senior analyst-graphic systems . . . New at Computek Corporation are **Ronald A. Zarski** and **Kenneth K. Warlick**—both as senior project specialists . . . **James A. Ferguson** has joined Infodata Systems, Inc., as Manager, Engineering Software Systems . . . Computer Image Corporation has named **William W. Jacquish** as Director of Special Projects.

**Virgil L. Swearingen** has been appointed Applications Programming Manager of the Technical Division at Tymshare Corporation . . . COMNET has named **Douglas M. Hutt** as Manager of Operating Systems in Washington, D. C. . . . **Joseph E. Izzo** is new Director of Western Region Services at Compress, Inc.

**David W. Coats** has been appointed Manager, Computer Center Services, by the Field Services Division of Computer Industries, Inc. . . . Brandon Systems Institute has appointed **Edwin E. Klein** as Director of Research and Development . . . Tally Corporation announces a new manufacturing management team: **David H. Moulton**, Director of Manufacturing; **Bart Parsini**, Production Manager;

**Michael Tremoglie**, Production Control Manager.

**John Certo** has been named Senior Applications Engineer, Product Marketing Group, at Applied Logic Corporation . . . Electro-Optical Systems has promoted **Donald L. Smelser** to Manager of Organization Development . . . Appointed Manager of Systems Programming for the Computer Systems Division of Graphic Controls Corporation was **Dr. Eamonn McQuade** . . .

**John G. Seay** has joined Leasco Systems and Research Corporation as Seminar Consultant. **Peter F. Urbach** has come aboard as Director of Product Planning for Leasco Information Products . . .

Applied Computer Sciences, Inc., has appointed **Richard N. Germano** as Senior Consultant . . . At System Development Corporation, **Marc Bendick** was named Manager, Engineering and System Evaluation Department, in the Air Operations Division.

## PROGRAMMERS

### BOLD CHALLENGES IN DATA PROCESSING!

The name of the game is "Do a better job—faster!" We play it all the time at the Army Air Force Exchange Service—the civilian organization which serves the Armed Forces personnel through "PX" and "BX" outlets—where we seek more and better EDP information to improve our performance in retailing!

If you enjoy a challenge, and the opportunity to show what you can do with excellent equipment and professional associates, your route to success may be with us! We need:

## COMPUTER PROGRAMMERS

You'd be writing specific programs to organize and process our management information by the most rapid and meaningful methods.

Our EDP division is fully equipped with 360 MOD 20/30/40 Disk/Tape/Card systems using ALC or COBOL, and staffed with real professionals who know how to use them!

**\$9,000—\$10,000**

You'll need a degree in computer science or its equivalent, plus at least one year of 360 experience.

In addition to a good starting salary, you'll receive outstanding fringe benefits, including life insurance, family coverage in our hospital—medical—surgical plan, liberal vacations, sick leave, retirement programs, and opportunity for advancement and promotion throughout our worldwide network. We try to promote from within—so you have an opportunity for great personal growth!

Relocation expenses will be paid.

If you qualify, AIRMAIL your resume, which must include SALARIES EARNED, to:

**MR. M. W. CARTER  
DEPT. 8-S**

**ARMY AIR FORCE  
EXCHANGE SERVICE**

**3911 Walton Walker Blvd.  
Dallas, Texas 75222**

(You will be contacted within  
two weeks.)

Equal Opportunity Employer

### COMPUTER PROFESSIONALS:

"HOWARD LEVIN IS PROBABLY  
THE WORLD'S BEST QUALIFIED\*  
EDP EMPLOYMENT AGENT"



\*MBA, Personnel management; 5 years industrial personnel experience for a major electronics and computer firm; 5 years hands-on computer programming and systems analysis experience; Director and placement counsellor for RSVP SERVICES since 1966.

His personal services are free and convenient. Why settle for less?

**SERVING  
PHILADELPHIA, NEW JERSEY, NEW YORK**  
CALL COLLECT: N.J. (609) 667-4488  
PHILA. (215) 922-3993

(24 HOUR LIVE ANSWERING SERVICE)

or send resume or rough notes of objective, salary, education, and experience to:



**HOWARD LEVIN**  
Director, Dept. S  
RSVP SERVICES  
ONE CHERRY HILL MALL (Suite 714)  
CHERRY HILL, N.J., 08034

Recruitment, Selection, Vocational Training, Placement for Computer Oriented Companies



## What do you want most?

- |                                      |                                   |
|--------------------------------------|-----------------------------------|
| <input type="checkbox"/> Respect     | <input type="checkbox"/> Title    |
| <input type="checkbox"/> Money       | <input type="checkbox"/> Location |
| <input type="checkbox"/> Challenge   | <input type="checkbox"/> Security |
| <input type="checkbox"/> Opportunity | <input type="checkbox"/> Fringes  |

Our nationwide survey in the Financial & EDP field revealed that employment desires were in the order listed above.

We can assist in finding exactly what you want in Financial or EDP employment. That's all we handle... we're the largest specialized source.

### Fees Paid By Management

|  |          |
|--|----------|
| EDP MANAGER<br>Service Co.—On-Line bkgd.                 | \$23,000 |
| SYSTEMS/PROCEDURES MGR.<br>Food Processor                | 23,000   |
| MIS DIRECTOR<br>Leading Retailer                         | 23,000   |
| DATA PROCESSING MGR.<br>Knowledge teleprocessing         | 20,000   |
| TECHNICAL SERVICES MGR.<br>Software services             | 19,000   |
| COMPUTER SERVICES MGR.<br>Solid 3rd generation bkgd.     | 19,000   |
| SYSTEMS MANAGER<br>Financial background                  | 18,000   |
| OPERATIONS RESEARCH<br>Banking bkgd., Linear Programming | 18,000   |
| SOFTWARE SPECIALIST<br>Real-time, operating systems      | 18,000   |
| PROGRAMMER/ANALYST<br>Brokerage background               | 18,000   |
| OPERATIONS MANAGER<br>360 & 1401, 3 shifts               | 17,000   |
| PROGRAMMER<br>Real-time—service co.                      | 17,000   |
| PROJECT LEADER<br>Chemical Company                       | 17,000   |
| SENIOR SYSTEMS ANALYST<br>Heavy accounting experience    | 16,000   |
| SYSTEMS ANALYST<br>Manufacturing bkgd.                   | 15,000   |
| PROGRAMMER ANALYST<br>Listed manufacturing co.           | 15,000   |
| SYSTEMS PROGRAMMER<br>Telecommunications, MVT/MFT        | 15,000   |
| PROGRAMMER<br>Exp'd 360/40 DOS COBOL/BAL                 | 14,000   |
| MANUAL SYSTEMS<br>Conversion experience                  | 13,000   |
| PROGRAMMER<br>1 yr. 360 COBOL                            | 12,000   |

Mail resume to your nearest R-H office.

## ROBERT HALF PERSONNEL AGENCIES

|                                      |                |
|--------------------------------------|----------------|
| Atlanta: 235 Peachtree St., NE       | (404) 688-2300 |
| Baltimore: One Charles Center        | (301) 837-0313 |
| Boston: 140 Federal St.              | (617) 423-6440 |
| Chicago: 333 N. Michigan Ave.        | (312) 782-6930 |
| Cincinnati: 606 Terrace Hilton       | (513) 621-7711 |
| Cleveland: 1367 East 6th St.         | (216) 621-0670 |
| Dallas: 1170 Hartford Bldg.          | (214) 742-9171 |
| Detroit: 1114 Guardian Bldg.         | (313) 961-5430 |
| Garden City, N.Y.: 585 Stewart Ave.  | (516) 248-1234 |
| Hartford, Conn.: 75 Pearl St.        | (203) 278-7170 |
| Los Angeles: 3600 Wilshire Blvd.     | (213) 381-7974 |
| Miami: 1107 Northeast Airlines Bldg. | (305) 377-8728 |
| Minneapolis: 822 Marquette Ave.      | (612) 336-8636 |
| New York: 330 Madison Ave.           | (212) 986-1300 |
| Newark: 1180 Raymond Blvd.           | (201) 623-3661 |
| Philadelphia: 2 Penn Center          | (215) 568-4580 |
| Pittsburgh: 429 Forbes Ave.          | (412) 471-5946 |
| Portland, Ore.: 610 S.W. Alder St.   | (503) 222-9778 |
| St. Louis: 1015 Locust St.           | (314) 231-0114 |
| San Francisco: 111 Pine St.          | (415) 434-1900 |
| Stamford, Conn.: 111 Prospect St.    | (203) 325-4158 |

World's Largest Financial & EDP Personnel Specialists.

## new products

A 4800 bit per second, automatically equalized, high-speed data modem has been developed by American Data Systems, Chatsworth, California.

Called, the ADS-448, the new modem eliminates the problem of manual equalization. The receiver automatically equalizes within milliseconds after turn on, and automatically and continuously tracks any changes in prevailing telephone line characteristics without adjustments of any kind. Error rate is said to be five times less than other existing modems.

The new modem transmits and receives data at 4800 bits per second (or any combination of 1200, 2400, 3600, equaling a total of 4800 bits per second), over Bell System Series 3002 telephone data lines. These lines can be either unconditioned, or C1, C2 or C4 conditioned.

Another major feature of the new modem is its front panel display, which provides not only a visual indication of relative Line Conditions, but also of Receiver and Transmitter Data and Baud Rates, Carrier Detection and Receiver Phaselock.

ADS-448 also incorporates a Loop Back Capability for both Local and Remote operations, as well as other internal self-checks to aid in system trouble-shooting.

For more information, circle No. 7 on the Reader Service Card.

\* \* \*

A computer-oriented employee attendance reporting system has just been announced by North Electric Company, Galion, Ohio, a subsidiary of United Utilities, Inc.

According to Norman Hockler, director of marketing, the bottle-neck of time clocks, collection and distribution of time cards and in and out timeclock punching are all eliminated with the new attendance reporting system (ARS). Simple insertion by the employee of his own, personal, specially-prepared identification card into an ARS station automatically provides payroll time-keeping information at the computer center.

Employees are issued wallet-sized plastic cards pre-punched with their payroll identification code. When they insert their card into any ARS station, their time-in and time-out is automatically recorded on punched cards, magnetic tape or as type-written copy and then it is fed into the computer.

A single digital clock assures time accuracy, and the entire time-in or time-out procedure is handled within two seconds. Separate attendance reports for any employee or group of employees can be produced at any time as a by-product of the ARS in addition to its providing payroll information input.

For more information, circle No. 8 on the Reader Service Card.

A new unit, the Model 208 Control Computer, has been added to the family of mini-computers of Computer Automation, Inc., Newport Beach, Calif. It is an 8-bit, stored program, parallel computer and features a new high speed memory with 2.6 micro-seconds full cycle time.

The Model 208 is expected to find service in concentrating and routing messages, monitoring and controlling traffic and computing service charges. It is also expected to find wide application in data acquisition and process control systems where high speed, reliability, I/O flexibility and programming convenience are important.

For more information, circle No. 9 on the Reader Service Card.

\* \* \*

GDI Inc., a manufacturer of computer peripheral equipment, has announced the Model CT-300 Card Transmitter, designed to transmit punched card data at a rate of up to 2400 BPS over standard dial-up or private lines. The system will interface directly with a Bell 202E2 or 202C or equivalent data sets. The interface conforms to EIA standard RS-232B and transmits data in standard bit serial USASC II language. A directly compatible interface with MDS 1103 and 6403 data recorders is also available.

The model CT-300 is designed for use in applications where the prime requirement is for transmission of punched card data from remote sites to a central location where it can be received by a data recorder, a central data switching unit, or the central computer. In these applications, keyboards and recorders are unnecessary and have been eliminated. This greatly simplifies the system and the result is a low cost reliable system.

For more information, circle No. 10 on the Reader Service Card.



DEEP/360 is a support package designed especially for BAL and COBOL programmers who are frustrated by data



exception errors while testing. DEEP/360, a product of Macro Services Corp., Boston, Mass., eliminates the problem of premature job cancellation caused by invalid data. It *repairs* faulty data, re-executes the affected instruction, reports the action via console message, then continues with the user's program. The purchase price includes a BAL source listing, a job stream for cataloging DEEP/360 into the user's relocatable library, and operating instructions.

For more information, circle No. 11 on the Reader Service Card.

\* \* \*

The PUNCHMASTER is a new automated control from California Computer Products, Inc. of Anaheim, Calif. The unit is attached to an IBM cardpunch or verifier to speed the conversion of source data into punched cards. The time-saving features include: a keypunch buffer allowing the operator to keypunch or verify at normal typing speeds; a program memory capable of handling up to 22 different card formats at one time; automatic left zero fill, with or without two-field accumulator; and an optional instruction display for faster, more reliable operator training.

For more information, circle No. 12 on the Reader Service Card.

\* \* \*

IBM has announced several major additions to its tele-processing product line, including a small keyboard terminal for telephone audio-response systems. The terminal is called the 2981 alphanumeric keyboard. It is a special order device that allows users to enter alphabetic and numeric information, as well as queries, into a system/360 and get computer spoken responses over the telephone.

Once the user has established telephone contact with the computer, he keys in his message, selecting from among 48 keys. The 26 alphabetic keys are arranged sequentially so that anyone can locate a letter quickly. There are also 22 keys representing numbers and special characters. As each key is depressed, an audible tone confirms that the information has been sent to the computer.

The 2981 uses elastic diaphragm switch technology (EDST)—flat, prewired switches that eliminate mechanical key linkage. The absence of moving parts in this technology is expected to keep maintenance requirements to a minimum.

For more information, circle No. 13 on the Reader Service Card.



# Programmers/ Systems Analysts

## Come Broaden Your Base in Business Information Systems

At Pratt & Whitney Aircraft, world's leading producer of dependable jet engines, you will find everything your analytical mind desires. Myriad business applications probing ever deeper into every facet of this vast aerospace organization. Manufacturing • Product Support • Engineering • Finance • Purchasing • Advanced Planning • Operations Research . . . and much more.

Ours is one of the most advanced and sophisticated business information computer complexes in the country. We have come as far as any. We will go further than most. Projects vary from simple card systems to complex on-line systems involving, for example, a Full Production Information System, Automated Financial Analysis and Reporting, and an Integrated Material Control System which includes procurement, forecasting and scheduling. Tools include 360 models 20, 30, 40 and 50; tapes and random devices; data collection equipment; on-line facilities; DOS and OS.

The total commitment of Information Systems to serving the needs of management at P&WA means real-time opportunity for EDP pro-

fessionals with promise. Our Systems-Programming Analysts are exposed to virtually every phase of the business. They get to move around, and they get to move up . . . just as fast as their talents will take them. Isn't it time you talked to P&WA?

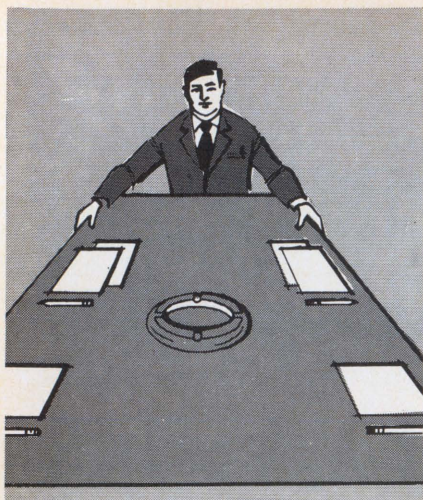
*If this sounds like your kind of action, why not send your resume with salary requirement to Mr. H. M. Heldmann, Professional Placement, Office A-43, Pratt & Whitney Aircraft, East Hartford, Connecticut 06108. An equal opportunity employer.*

**Pratt &  
Whitney  
Aircraft**

**U  
A**

DIVISION OF UNITED AIRCRAFT CORP.





## Gilbert Lane's job is to get you a better one

Our emphasis is on the total man . . . what he wants in a career and for the future. It's a principle that has helped thousands of candidates to reach top positions.

One of the companies we represent enjoys—and will continue to enjoy—an impressive growth rate. The firm's management—progressive in personnel policies as well as production—is looking for men on the way up in the field of computer technology.

We strongly suggest that opportunities for professional growth are greater with this organization than those you may have at present.

These positions are with a multi-plant international organization with an unusually fine growth pattern.

Fees and other expenses paid by our client

Call or submit resume.

### Gilbert Lane Personnel Agencies, Inc.

Lake Success, N.Y. 11040  
3000 Marcus Avenue

Newark, N. J. 07102  
10 Commerce Court

New York 10017  
505 Fifth Avenue

Pittsburgh, Pa. 15222  
903 North American Rockwell Bldg.

Washington, D.C. 20036  
1025 Connecticut Avenue

Offices in other major cities



### Free ...



Pocket Data Decoder . . . Dozens of uses daily. Unique data decoder solves information problems instantly. Yours for the asking. No obligation.

For more information, circle No. 17 on the Reader Service Card

PLUS, a Program Library Update System has been announced by Cullinane Corp., Boston, Mass. The program provides for storage and maintenance of source language programs on tape or disk. Any program language may be stored or intermixed in the file including COBOL, Assembly, PL/1, and FORTRAN. Test data decks, object decks, and job control language decks may also be stored on the library. The program also will generate a job stream file with job control setup to compile or assemble modified programs.

One feature of the program is the generation of a Library Index Report following each run. This report is a table of contents of the PLUS program library. It includes such information as a Version Number automatically given to each program and increased with each entry of an entirely new program version, and a Modification Number given a program and increased each time any change is made. The Program description, the date of last revision, the language, the author, the number of statements, and the number of changed statements are also reported.

In addition to the Library Index report, two other reports are produced. A Report of Changes itemizes changed statements, providing a valuable historical record of all maintenance activity on a program. A Job Schedule Report, listing job control setups, is produced when this facility of the program is used. PLUS also reproduces all or portions of any source programs on the printer listing or on punch files.

For more information, circle No. 14 on the Reader Service Card.

\* \* \*

A new unit, the DIMBO-10, manufactured by BCD Computing Corp., Deer Park, New York, is a self-contained electronic information storage and retrieval system. It utilizes a disk memory for information storage and has optional input-output configurations.

The DIMBO-10 system will store 1200 to 40,000 32-character records; 64-character or larger record lengths, and larger file capacities (practically without limit) are available as options. Other options include magnetic or paper tape input and output for file loading and audit trail, an arithmetic capability, and remote consoles for inquiry into the central file.

Average access time is less than 0.1 second. Standard operation includes: ENTER a new item; DELETE an item; SEARCH for an item; ALTER an item and restore it; and PRINTOUT the entire file.

DIMBO-10 is intended for the user who must search a large list of entries in order to retrieve information on one of them. A search consists of locating an item from its identifier which is then typed in the DIMBO-10. The system locates the proper item and types all the stored information for the user's study. The item may then be altered and returned to the file or deleted and a new item entered.

For more information, circle No. 15 on the Reader Service Card.



### CAREER MEMO

To the Computer Professional

Does your present position lack pride of accomplishment? . . . If so, it is time for a change. Professional Opportunities presently exist in:

SOFTWARE DEVELOPMENT  
SYSTEMS DESIGN  
PROGRAMMING  
REAL TIME SYSTEMS  
TIME SHARING  
MANA. INFO SYSTEMS  
ENGINEERING  
MATHEMATICS  
OPERATIONS RESEARCH

Your confidential inquiry is welcome. Call or write, Robert L. Keilholtz or Donald Wayne,

EVERETT KELLEY ASSOCIATES, INC.  
Suite 1300—121 S. Broad St.  
Philadelphia, Pa. 19107  
215—KI 6-5240

Placement of Computer Professionals since BINAC.



## programmers • analysts

# GROW

NATIONWIDE POSITIONS  
FROM \$7,000 TO \$25,000  
ALL FEE PAID

- SOFTWARE DEVELOPMENT
- SCIENTIFIC PROGRAMMING
- REAL TIMES SYSTEMS
- BUSINESS SYSTEMS
- COMMERCIAL PROGRAMMING
- MANAGEMENT INFO SYSTEMS

Send resume, in confidence, with present salary and geographic preference.

### FREE: CAREER OPPORTUNITIES BULLETIN

For a complete listing of outstanding positions with national companies circle subscriber reader card using home address only. No obligation.

## La Salle Associates

DEPT. A

719 N. 25th STREET, PHILA., PA. 19130

For more information, circle No. 16 on the Reader Service Card

SOFTWARE ACE



# S/A market place

where you can reach <sup>130,000</sup> programmers, mathematicians, analysts and EDP managers

## RATES

**Classified**—75¢ per word, minimum order \$7.50. Blind ads are an additional \$10.00. Payment must accompany copy.

**Display Classified**—One inch by one column, \$75.00. Column width is 2 1/4". Help wanted and employment services ads will be accepted in the classified section. Ads of 1/8 page or more will be listed in the Advertisers' Index, and will qualify for the free resume service.

**Closing Date**—the 10th of the month preceding (i.e. May issue closes April 10th). Send order and remittance to:

## software age

Classified Department  
P. O. Box 2076, Madison, Wisconsin 53701

## SITUATIONS WANTED

**TAX AUDITOR** without EDP exp. seeks part time work, Los Angeles area. S/A Box 803, 2211 Fordem Ave., Madison, Wis. 53701.

## EMPLOYMENT AND SEARCH COMPANIES

### SCIENTIFIC PROGRAMMER

Offering a stimulating variety of work with primary emphasis directed toward the analysis and programming of reactor engineering and physics problems. Fortran programming utilizing IBM 1130, 1800, 360/40, 360/50, 360/75 and CDC 6400. BS or MS degree in mathematics, physics or engineering with 2 or more years scientific programming experience required. Resume should include references and salary. Write or phone Frank Nitzberg, Personnel Coordinator, phone (313) 962-9510. ATOMIC POWER DEVELOPMENT ASSOCIATES, INC., 1911 First Street, Detroit, Michigan 48226. An Equal Opportunity Employer

### PROGRAMMERS (3)

Large financial firm needs (1) Senior, salary to \$28,000; (2) Intermediates, salaries \$16,000 to \$23,000 to help open new company locations. Entire fee, traveling, if necessary—moving expenses are all paid by your new employer.

**ERIN EXECUTIVE AGENCY**  
132 W. 34 St., New York, N. Y. 10001  
Phone: (212) 594-8296

## DATA PROCESSING POSITIONS IN THE SOUTHWEST

Contact:  
**DATA PROCESSING CAREERS**  
Richard Kemmerly, Suite 1109, Stemmons Towers West, Dallas, Texas 75207. 214/637-6360.

PENNSYLVANIA, NEW JERSEY, DELAWARE contain diversified opportunities for professional talent in all functions of E.D.P. If you desire to pinpoint your search in our area, contact us. With 9 highly effective years behind us we need not employ gimmicks nor shotgun duplicating techniques. We are large enough to have extensive knowledge of the market yet disciplined enough to remain personal and confidential. All fees paid. K. J. Gillespie, ANDERSON-TAYLOR Associates, 230 S. 15th St., Philadelphia, Pa. 19102. (215) KI 6-6333.

## PROFESSIONAL SERVICES

**ADD/SUBTRACT 6-DIGIT HEXADECIMALS** in seconds with 100% accuracy. The pocket **HEXADDER**, \$15. Free brochure from **HEXCO**, Dept. SA, P. O. Box 55588, Houston, Texas 77055.

**CONSULTANTS:** Commercial applications 1400, 360. Conversions, programming, systems design, testing, documenting. Job or contract. Computerized business mailing list, United States, \$35 per 1000 names. **ALLIED COMPUTER CONSULTANTS**, Box 133, Fairlawn, N. J. 07410.

**EXP. PROG./ANAL. SEEKS P/T WORK:** S/360 DOS COBOL. Resume upon request. Reply Apt. B6, 5502—14th Ave., Brooklyn, N.Y. 11219.

### EDP RESUMES

A comprehensive manual on how to write your own resume, written especially for EDP personnel. Send \$4.25 to

**K & H ASSOCIATES**  
Dept. S, P. O. Box 265  
Horseheads, New York 14845

**WE WILL CONTRACT** system planning, application, or system work to \$10,000. We possess a complete background in statistics, linear programming, mathematics, civil engineering, processors, business data systems, data retrieval/processing; with a unique knowledge of OS/360 software and hardware. For more information in your field, write: **SYSTEM PLANNING AND SOFTWARE MANAGEMENT**, S/A Box 802, 2211 Fordem Avenue, Madison, Wisconsin 53701.

## PRODUCTS

**WANTED—USED CARD FILES:** MacDonald, Box 68-501, Miami, Florida 33168.

## CLASSIFIED ADVERTISING ORDER FORM

|    |    |    |    |    |
|----|----|----|----|----|
| 1  | 2  | 3  | 4  | 5  |
| 6  | 7  | 8  | 9  | 10 |
| 11 | 12 | 13 | 14 | 15 |
| 16 | 17 | 18 | 19 | 20 |
| 21 | 22 | 23 | 24 | 25 |
| 26 | 27 | 28 | 29 | 30 |
| 31 | 32 | 33 | 34 | 35 |

Words \_\_\_\_\_ = \$ \_\_\_\_\_

Blind Ad \$10.00      Insert \_\_\_\_\_ time(s)      Total Enclosed \$ \_\_\_\_\_

NAME \_\_\_\_\_

ADDRESS \_\_\_\_\_

CITY \_\_\_\_\_ STATE \_\_\_\_\_ ZIP \_\_\_\_\_

Signature \_\_\_\_\_

**WORD COUNT:** Includes name and address (unless blind ad). The name of the city (Des Moines), state (New York) and zip code are counted as a total of two (2) words. Each abbreviation, initial, single figure or group of figures or letters count as a word. Symbols such as 35mm, COD, AC, etc. count as a single word. Hyphenated words count as two (2) words.

Coming in  
September  
SA's Annual  
Guide to EDP  
Employers



# You probably aren't our kind of engineer.

No offense intended. We just know what we want.

We're computer memory specialists. If you know our products, you know we're good.

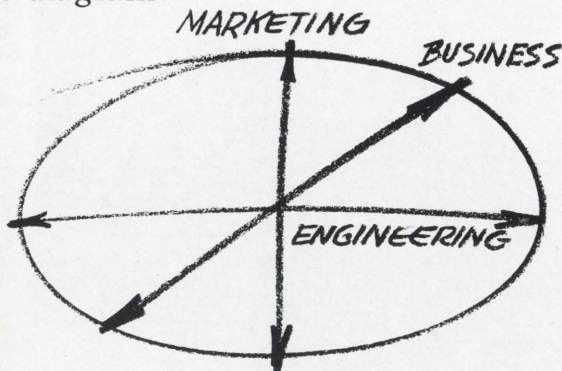
Not surprisingly, we're growing fast.

So we need engineers. Good minds. Good technical backgrounds. But that's not all.

You see, back when we were small we learned an important lesson. Each of our engineers had to get involved in everything: research, design, costing, marketing, production — you name it. Being involved, they became committed. And worked better for it.

That's how we got our reputation for doing what we do better than anyone else. We intend to keep it.

That's why we take such a close look at all applicants for our engineering positions. We'll talk to you about interests and aspirations and experience. And, at some point along the line, we'll draw this diagram:



It's the essence of what we mean by our kind of engineer. An interest in and understanding of all aspects of our com-

pany's activities. You could call it balance. Whatever it is, it works for us.

\* \* \*

What can we offer you?

First, a good salary. (We want the best and we're willing to pay for it.) Second, the opportunity to advance rapidly along either engineering or administrative lines. (Lots of outfits will tell you this, then stick you in an isolation ward. We mean what we say.) Third, the opportunity to grow with the best engineering staff in the industry. Fourth, the satisfaction and pride of seeing the products you work on produced and sold.

\* \* \*

We make memory systems and stacks and planes and printed circuits. We're looking to the future with research in plated wire and films. And we're in the process of introducing a brand new product: MAC 16, a compact, inexpensive Multi-Application Computer. Our division is going to keep right on growing. And we'll need even more of our kind of engineers.

If we sound like your kind of company and if you have an M.E. or E.E. degree and computer-related experience, let's get together.

Write me a letter: Mr. E. A. Gage, 6201 E. Randolph Street, Los Angeles, California 90022. Or, call me collect at (213) 722-6810.

Naturally, we're an equal opportunity employer.

**LOCKHEED ELECTRONICS COMPANY**

Data Products Division • Lockheed Aircraft Corporation



# software age

THIS INQUIRY IS IN  
DIRECT RESPONSE TO  
YOUR ADVERTISEMENT  
IN  
SOFTWARE AGE  
MAGAZINE

## CONFIDENTIAL INQUIRY

Your original copy of this form will be retained at the offices of SOFTWARE AGE and will be used for no other purpose than to notify the specific firms which you have checked (on the reverse side) of your interest.

### TYPE OR PRINT CLEARLY FOR PHOTO REPRODUCTION

JOB DESIRED: \_\_\_\_\_

List computer hardware knowledge (names of systems, tape, disk, terminals, etc.): \_\_\_\_\_  
\_\_\_\_\_  
\_\_\_\_\_

Programming specialties and years of experience (commercial, scientific, theoretical, experimental, analog, etc.): \_\_\_\_\_  
\_\_\_\_\_  
\_\_\_\_\_

Systems programming on which you have had development experience (compilers, assemblers, executives, monitors, O.S., etc. Indicate for what computer): \_\_\_\_\_  
\_\_\_\_\_  
\_\_\_\_\_

Programming languages used and extent of experience (COBOL, FORTRAN, etc.): \_\_\_\_\_  
\_\_\_\_\_  
\_\_\_\_\_

Applications programmed (aerospace, banking, insurance, math subroutines, compilers, etc.): \_\_\_\_\_  
\_\_\_\_\_  
\_\_\_\_\_

Systems analysis experience (card design, flow charting, operation analysis, etc.): \_\_\_\_\_  
\_\_\_\_\_  
\_\_\_\_\_

EDP management experience (include years and number of people reporting to you): \_\_\_\_\_  
\_\_\_\_\_  
\_\_\_\_\_

SALARY: \_\_\_\_\_ DATE OF AVAILABILITY: \_\_\_\_\_  
(current) (desired)

EDUCATION: Indicate major as well as degree unless self-explanatory.

|               |       |       |
|---------------|-------|-------|
| Degrees _____ | _____ | _____ |
| Years _____   | _____ | _____ |
| Schools _____ | _____ | _____ |

EMPLOYMENT: Indicate present employment and previous jobs below.

|                      |                |                |
|----------------------|----------------|----------------|
| Employer _____       | _____          | _____          |
| City _____           | _____          | _____          |
| Years _____ to _____ | _____ to _____ | _____ to _____ |
| Title or _____       | _____          | _____          |
| Function _____       | _____          | _____          |

Name \_\_\_\_\_ Signature \_\_\_\_\_

Home Address \_\_\_\_\_ (city) \_\_\_\_\_ Home Phone \_\_\_\_\_

(state) \_\_\_\_\_ (ZIP code) \_\_\_\_\_ Age \_\_\_\_\_ U. S. Citizen? \_\_\_\_\_

Security Clearance \_\_\_\_\_ Location Preference \_\_\_\_\_

Marital Status \_\_\_\_\_

Military Status \_\_\_\_\_

BE SURE YOU HAVE CHECKED ON REVERSE SIDE  
THE COMPANIES YOU WANT TO SEE THIS INQUIRY.  
PUT FORM IN STAMPED ENVELOPE AND MAIL TO:

software age  
MAGAZINE

P. O. BOX 2076  
2211 FORDEM AVE., MADISON, WIS. 53701



# check your interests here

Fill in the confidential inquiry form on the other side of this sheet. This form provides all the information advertisers require to screen applicants. If further information is desired, you will hear from the advertiser direct. Then, check below the boxes of those companies to which you want copies of your

form sent. Mail to SOFTWARE AGE, P.O. Box 2076, 2211 Fordem Avenue, Madison, Wisconsin 53701. (Please do not send us your own resume. We will only process this form. A new form must be filled out for each issue in which you are answering ads.)

|   | Page      |
|---|-----------|
| <input type="checkbox"/> 1. Army Air Force Exchange Service .....   | 23        |
| <input type="checkbox"/> 2. Booz · Allen Applied Research Inc. .... | 4         |
| <input type="checkbox"/> 3. Burroughs Corp. ....                    | 3         |
| <input type="checkbox"/> 4. Capitol Industries .....                | 10        |
| <input type="checkbox"/> 5. COMPDATA Services Corp. ....            | 22        |
| <input type="checkbox"/> 6. COMSAT .....                            | 17        |
| <input type="checkbox"/> 7. Foxboro Co. ....                        | 4th Cover |
| <input type="checkbox"/> 8. Honeywell, Inc. ....                    | 3rd Cover |
| <input type="checkbox"/> 9. IBM Corp. ....                          | 5         |
| <input type="checkbox"/> 10. ITT Federal Electric Corp. ....        | 11        |
| <input type="checkbox"/> 11. Lockheed Electronics Co. ....          | 28        |
| <input type="checkbox"/> 12. Lockheed Missiles & Space Co. ....     | 18        |
| <input type="checkbox"/> 13. National Cash Register Co. ....        | 19        |
| <input type="checkbox"/> 14. Pratt & Whitney Aircraft .....         | 25        |
| <input type="checkbox"/> 15. RCA, Information Systems Div. ....     | 14        |
| <input type="checkbox"/> 16. SA-801 .....                           | 12        |
| <input type="checkbox"/> 17. Scientific Data Systems .....          | 2nd Cover |
| <input type="checkbox"/> 18. Sikorsky Aircraft .....                | 6         |
| <input type="checkbox"/> 19. Sperry Rand Corp./Gyroscope Div. ....  | 12        |

|  | Page    |
|--|---------|
| <input type="checkbox"/> 20. Univac Corp. .... | 20 & 21 |

## EMPLOYMENT AND SEARCH AGENCIES

|   |    |
|---|----|
| <input type="checkbox"/> 21. Computer Personnel Agency, Inc. ....       | 7  |
| <input type="checkbox"/> 22. Drew Personnel Placement Center .....      | 16 |
| <input type="checkbox"/> 23. Fortune Personnel Agency .....             | 12 |
| <input type="checkbox"/> 24. Fox-Morris Associates .....                | 7  |
| <input type="checkbox"/> 25. Robert Half Personnel Agencies .....       | 24 |
| <input type="checkbox"/> 26. Input, Inc. ....                           | 22 |
| <input type="checkbox"/> 27. Everett Kelley Associates, Inc. ....       | 26 |
| <input type="checkbox"/> 28. Gilbert Lane Personnel Agencies, Inc. .... | 26 |
| <input type="checkbox"/> 29. LaSalle Associates .....                   | 26 |
| <input type="checkbox"/> 30. Lawrence Personnel .....                   | 22 |
| <input type="checkbox"/> 31. Management Scientists, Inc. ....           | 10 |
| <input type="checkbox"/> 32. RSVP Services .....                        | 23 |
| <input type="checkbox"/> 33. Source EDP .....                           | 18 |

## PRODUCTS AND SERVICES

(Use Reader Service Card)

|   |    |
|---|----|
| North American School of Systems & Procedures ..... | 16 |
|---|----|

I do not now receive S/A. Please enter my FREE subscription.

.....  
 Name Street Address

.....  
 City State Zip Code

.....  
 Prime Experience in What Industry / My Specialty

Technical Degree       Non-Technical Degree       No Degree

.....  
 Year Born       I Have Analog/Hybrid Experience



P. O. Box 2076  
 2211 Fordem Avenue  
 Madison, Wisconsin 53701